

MODÜLER KISMA VALFLERİ MODULAR THROTTLE VALVES MT - 02

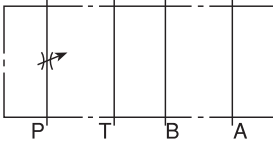


TEKNİK ÖZELLİKLER / TECHNICAL DATA

MAKSİMUM ÇALIŞMA BASINCI
MAX. OPERATING PRESSURE:
250 KGF/CM² (3600 PSI)

MAKSİMUM DEBİ / MAX. FLOW:
40 LPM (10.6 GPM)

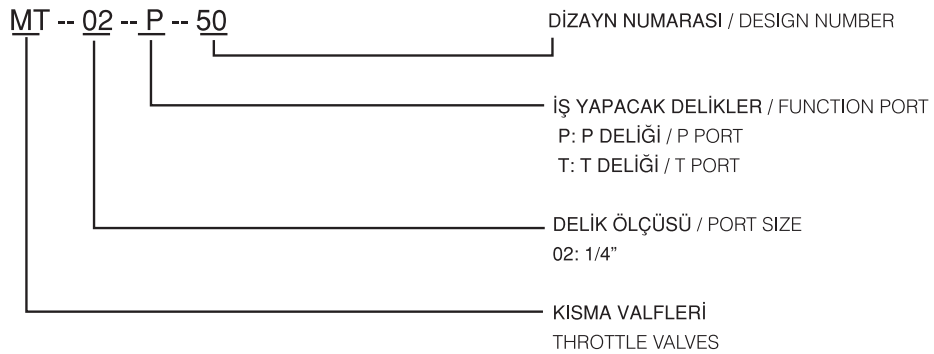
SEMBOLLER / SYMBOLS



DÜŞÜNCELER / REMARKS

* AKIŞ AYARLANIRKEN, AKIŞI AZALTMAK İÇİN SAAT YÖNÜNDE, ARTTIRMAK İÇİN SAAT YÖNÜNÜN TERSİNE ÇEVİRİNİZ.
* WHEN ADJUST FLOW, USE CLOCKWISE TURN TO DECREASE THE FLOW AND USE COUNTER CLOCKWISE TURN TO INCREASE THE FLOW.

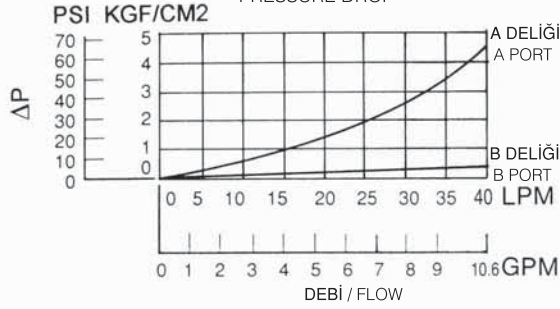
SİPARİŞ KODU / ORDERING CODE



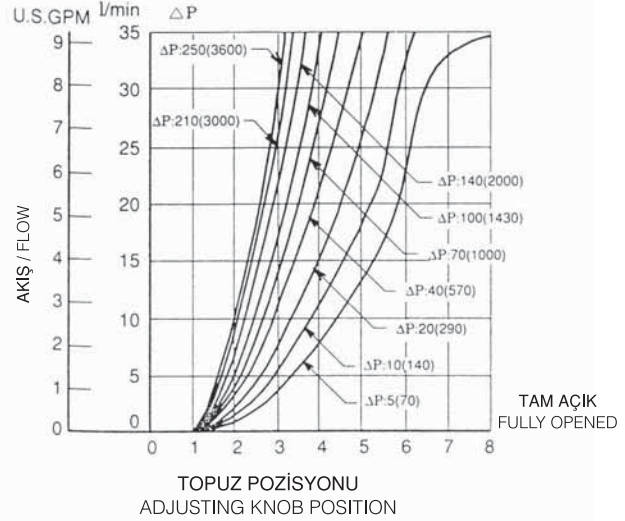
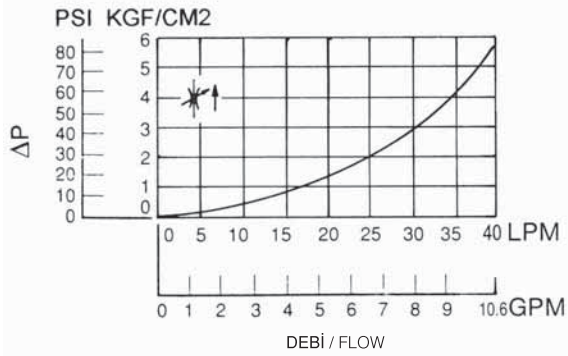
MT-02 SERİLERİ / MT-02 SERIES

ÇALIŞMA EĞRİLERİ / PERFORMANCE CURVES

MT - 02 P/T

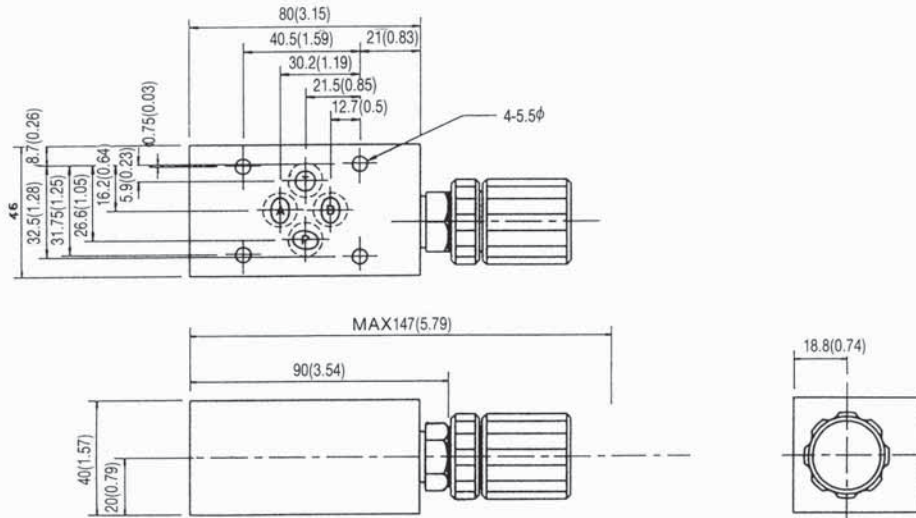
BASINÇ DÜŞÜŞÜ
PRESSURE DROP

YAĞ ÇALIŞMA ÖLÇÜSÜ / MEASURED AT V= 35 CST AND T= 50°C

KISMA VALFİ TAM AÇIK DURUMDAYKEN BASINÇ DÜŞÜŞÜ
PRESSURE DROP AT THROTTLE FULLY OPENED

ÖLÇÜLER / DIMENSIONS

MT - 02 P/T

BİRİM / UNIT: MM (INCH)
AĞIRLIK / WEIGHT: 1.1 KGS

MODÜLER KISMA VALFLERİ MODULAR THROTTLE VALVES MT - 03

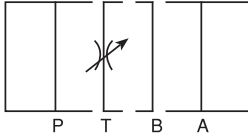


TEKNİK ÖZELLİKLER / TECHNICAL DATA

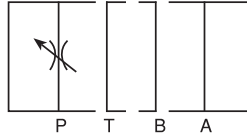
MAKSİMUM ÇALIŞMA BASINCI
MAX. OPERATING PRESSURE:
250 KGF/CM² (3600 PSI)

MAKSİMUM DEBİ / MAX. FLOW:
70 LPM (18.5 GPM)

SEMBOLLER / SYMBOLS



MT-03T



MT-03P

DÜŞÜNCELER / REMARKS

- * DEBİ AYARLANIRKEN, SAAT YÖNÜNDE ÇEVİRİRSENİZ DEBİ AZALIR, SAAT YÖNÜNÜN TERSİNDE ÇEVİRİRSENİZ DEBİ ARTAR.
- * AKIŞIN TAM OLARAK ENGELLENMESİ MÜMKÜN DEĞİLDİR. BİR MİKTARDA OLSA AKIŞ OLACAKTIR.
- * WHEN ADJUST FLOW, USE CLOCKWISE TURN TO DECREASE THE FLOW AND USE COUNTER CLOCKWISE TURN TO INCREASE THE FLOW.
- * FLOW CAN NOT BE ABSOLUTELY OBSTRUCTED, SOME SMALL VOLUME WILL PASS THROUGH.

SİPARİŞ KODU / ORDERING CODE

MT -- 03 -- P -- 50

DİZAYN NUMARASI / DESIGN NUMBER

İŞ YAPACAK DELİKLER / FUNCTION PORT:

P: P DELİĞİ / P PORT

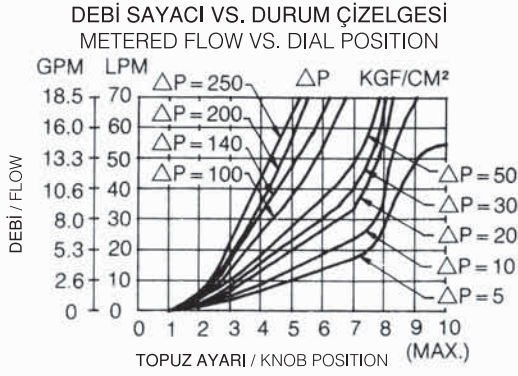
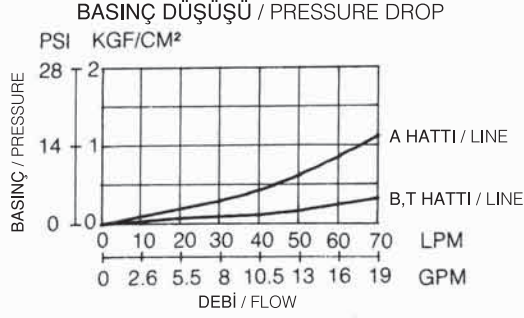
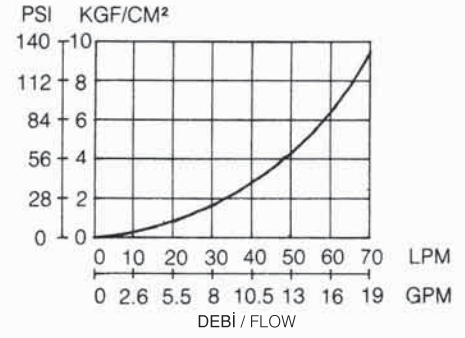
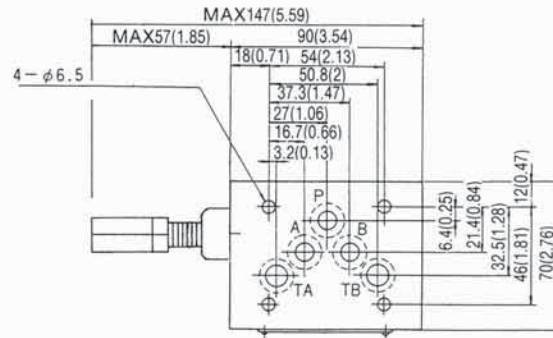
T: T DELİĞİ / T PORT

DELİK ÖLÇÜSÜ / PORT SIZE
03: 3/8"

KISMA VALFLERİ / THROTTLE VALVES

MT -03 SERİLERİ / MT - 03 SERIES**PERFORMANS EĞRİLERİ / PERFORMANCE CURVES****MT -03 P/T**

YAĞ ÇALIŞMA ÖLÇÜSÜ / MEASURED AT V= 35 CST AND T= 50 °C

**KISMA VALFİ TAM AÇIKKEN BASINÇ DÜŞÜŞÜ
PRESSURE DROP AT THROTTLE FULLY OPENED****ÖLÇÜLER / DIMENSIONS****MT -03 P/T**BİRİM / UNIT: MM (INCH)
AĞIRLIK / WEIGHT: 2.5 KGS

TOPUZLA / WITH KNOB

