

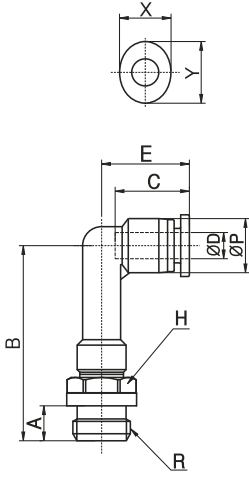
PLLP - Uzun Dirsek / Extended Male Elbow



Ölçü Tablosu / Dimension Chart

MODEL	ØD	R	ØP	A	B	C	E	H	X	Y	Orifis (mm) Orifice (mm)	Ağırlık (g) Weight (g)	Adet / Kutu Qty / Box
PLLP 04-M5	4	M5	10.4	4	26.4	16	18.1	8	10	12	2	4.2	100
PLLP 04-M6		M6	10.4	5	26.4	16	18.1	10	10	12	3	6.5	100
PLLP 04-01		G1/8	10.4	8	25.5	16	18.1	10	10	12	3	10.8	50
PLLP 04-02		G1/4	10.4	11	25.5	16	18.1	14	10	12	3	18.7	50
PLLP 04-03	6	G3/8	10.4	12	26	16	18.1	17	10	12	3	28.5	50
PLLP 06-M5		M5	12.8	4	34.6	17	20.1	12	12	14	2	11.3	50
PLLP 06-M6		M6	12.8	5	34.6	17	20.1	12	12	14	4	13	50
PLLP 06-01		G1/8	12.8	8	33.2	17	20.1	12	12	14	4	14.3	50
PLLP 06-02		G1/4	12.8	11	33.2	17	20.1	14	12	14	4	20.4	50
PLLP 06-03		G3/8	12.8	12	33.7	17	20.1	17	12	14	4	31.7	50
PLLP 06-04	8	G1/2	12.8	15	35.7	17	20.1	21	12	14	4	58.3	25
PLLP 08-01		G1/8	14.4	8	37.7	18.5	22.7	14	14	16	6	17.5	50
PLLP 08-02		G1/4	14.4	11	37.7	18.5	22.7	14	14	16	6	23.4	50
PLLP 08-03		G3/8	14.4	12	38.2	18.5	22.7	17	14	16	6	33.3	25
PLLP 08-04	10	G1/2	14.4	15	40.2	18.5	22.7	21	14	16	6	56.3	20
PLLP 10-01		G1/8	17.6	8	43.7	21	26.1	17	17	19	6	26.4	25
PLLP 10-02		G1/4	17.6	11	43.7	21	26.1	17	17	19	8	30.8	25
PLLP 10-03		G3/8	17.6	12	43.7	21	26.1	17	17	19	8	37	25
PLLP 10-04	12	G1/2	17.6	15	45.7	21	26.1	21	17	19	8	61.4	20
PLLP 12-01		G1/8	21	8	51.5	22.5	29.3	19	21	23	5	35	25
PLLP 12-02		G1/4	21	11	51.5	22.5	29.3	19	21	23	9	39.6	25
PLLP 12-03		G3/8	21	12	51.5	22.5	29.3	19	21	23	10	45	20
PLLP 12-04	12	G1/2	21	15	52.5	22.5	29.3	21	21	23	10	64.9	20

Teknik Çizim / Technical Drawing



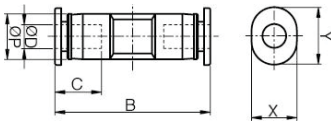
PUC - Nipel Bağlantı / Union Straight



Ölçü Tablosu / Dimension Chart

MODEL	ØD	ØP	B	C	X	Y	Orifis (mm) Orifice (mm)	Ağırlık (g) Weight (g)	Adet/Kutu Qty / Box
PUC 04	4	10	33.4	16	10	12	3	4.5	100
PUC 06	6	12.4	35.4	17	12	14	5	5.6	50
PUC 08	8	14.4	39	18.5	14	16	7	7.7	50
PUC 10	10	17.6	43	21	17	19	8	13.4	50
PUC 12	12	21.2	47	22.5	21	23	10	18.8	25
PUC 16	16	25.6	62.2	24.8	24	27	13	35.3	20

Teknik Çizim / Technical Drawing



PUL - Dirsek / Union Elbow



Ölçü Tablosu / Dimension Chart

MODEL	ØD	ØP	E	C	F	Ød	X	Y	Orifis (mm) Orifice (mm)	Ağırlık (g) Weight (g)	Adet/Kutu Qty / Box
PUL 04	4	10	18.7	16	6	2.2	10	12	3	4.7	100
PUL 06	6	12.4	20.4	17	8	3.2	12	14	5	6.2	50
PUL 08	8	14.4	22.8	18.5	10	4.2	14	16	7	8.7	50
PUL 10	10	17.6	26.1	21	12	4.2	17	19	8	15.1	25
PUL 12	12	21.2	29	22.5	14	4.2	21	23	10	20.7	25
PUL 16	16	25.6	31.1	24.8	16.3	5.3	24	27	13	36.5	20

Teknik Çizim / Technical Drawing

