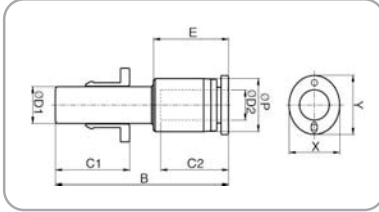


PGJ - Boru Girişli Düşürücü / Plug-In Reducer



Teknik Çizim / Technical Drawing



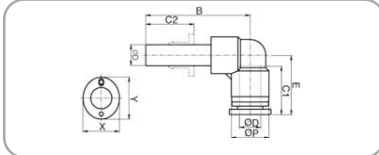
Ölçü Tablosu / Dimension Chart

MODEL	ØD1	ØD2	ØP	B	C1	C2	E	X	Y	Orifis (mm) Orifice (mm)	Ağırlık (g) Weight (g)	Adet/Kutu Qty / Box
PGJ 06-04	6	4	10	41.2	17	16	18.2	10	12	3	3.2	100
PGJ 08-04	8	4	10	43.2	18.5	16	18.2	10	12	3	3.8	100
PGJ 08-06		6	12.4	44.2	18.5	17	19.2	12	14	5	4.2	50
PGJ 10-06	10	6	12.4	46.2	21	17	19.2	12	14	5	4.9	50
PGJ 10-08		8	14.4	47.5	21	18.5	20.5	14	16	7	6.1	50
PGJ 12-06	12	6	12.4	48.2	22.5	17	19.2	12	14	5	5.9	25
PGJ 12-08		8	14.4	49.5	22.5	18.5	20.5	14	16	7	7	25
PGJ 12-10		10	17.6	52.4	22.5	21	23	17	19	8	9.9	25

PLJ - Boru Girişli Dirsek / Plug-In Elbow



Teknik Çizim / Technical Drawing



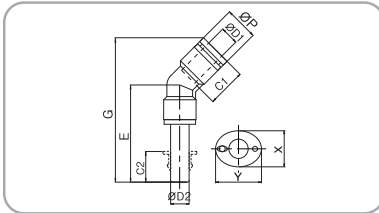
Ölçü Tablosu / Dimension Chart

MODEL	ØD	ØP	B	C1	E	C2	X	Y	Orifis (mm) Orifice (mm)	Ağırlık (g) Weight (g)	Adet/Kutu Qty / Box
PLJ 04	4	10.4	30.6	16	18.7	16	10	12	3	4.7	100
PLJ 06	6	12.4	35	17	21.1	17	12	14	5	5.4	50
PLJ 08	8	14.4	40	18.5	22.8	18.5	14	16	7	8	50
PLJ 10	10	17.6	48	21	26.1	21	17	19	8	15	50
PLJ 12	12	21	82	22.5	24.3	22.5	21	23	10	21.4	25
PLJ 16	16	25.6	58.3	24.8	33.5	24.8	24	27	13	23.2	20

PLJ45 - Boru Girişli 45° Dirsek / Plug-In Extended Elbow



Teknik Çizim / Technical Drawing



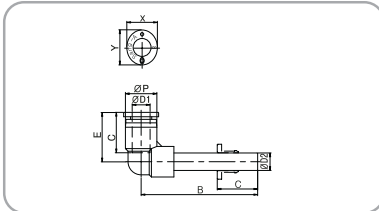
Ölçü Tablosu / Dimension Chart

MODEL	ØD1	ØD2	ØP	E	C1	C2	G	X	Y	Orifis (mm) Orifice (mm)	Ağırlık (g) Weight (g)	Adet/Kutu Qty / Box
PLJ45 04	4	4	10.4	32.6	16	16	45.36	10	12	3	6.5	100
PLJ45 06	6	6	12.8	37	17	17	51.18	12	14	5	8.9	50
PLJ45 08	8	8	14.4	42	18.5	18.5	58.03	14	16	7	12.2	50
PLJ45 10	10	10	17.6	48	21	21	66.35	17	19	8	19.8	50
PLJ45 12	12	12	21	53.9	22.5	22.5	74.57	21	23	10	31.2	25

PLLJ - Boru Girişli Dirsek (Uzun) / Plug-In Extended Elbow



Teknik Çizim / Technical Drawing



Ölçü Tablosu / Dimension Chart

MODEL	ØD1	ØD2	ØP	B	C	E	X	Y	Orifis (mm) Orifice (mm)	Ağırlık (g) Weight (g)	Adet/Kutu Qty / Box
PLLJ 04	4	4	10.4	39.3	16	18.7	10	12	3	4	100
PLLJ 06	6	6	12.4	49.8	17	21.1	12	14	5	5.5	50
PLLJ 08	8	8	14.4	54	18.5	22.8	14	16	7	8.5	50
PLLJ 10	10	10	17.6	62	21	26.1	17	19	8	13.5	25
PLLJ 12	12	12	21.2	68.5	22.5	29.3	21	23	10	19.2	25
PLLJ 16	16	16	25.6	59.8	24.8	33.5	24	27	13	22.3	20