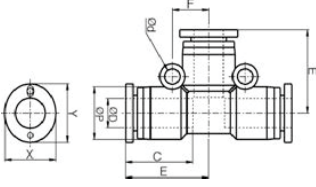


PUT - Te Bağlantı / Union Tee



Teknik Çizim / Technical Drawing



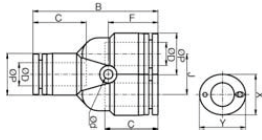
Ölçü Tablosu / Dimension Chart

MODEL	ØD	ØP	E	C	F	Ød	X	Y	Orifis (mm) Orifice (mm)	Ağırlık (g) Weight (g)	Adet/Kutu Qty / Box
PUT 04	4	10	18.5	16	6	2.2	10	12	3	7	100
PUT 06	6	12.4	20.4	17	8	3.2	12	14	5	9.4	50
PUT 08	8	14.4	22.8	18.5	9	4.2	14	16	7	12.6	50
PUT 10	10	17.6	26.1	21	12	4.2	17	19	8	22.1	25
PUT 12	12	21.2	29	22.5	14	4.2	21	23	10	30.7	20
PUT 16	16	25.6	31.1	24.8	16.6	5.3	24	27	13	52.3	16

PY - Ye Bağlantı / Union Y



Teknik Çizim / Technical Drawing



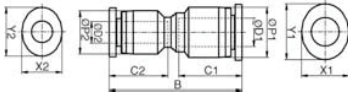
Ölçü Tablosu / Dimension Chart

MODEL	ØD	ØP	B	C	Ød	J	F	X	Y	Orifis (mm) Orifice (mm)	Ağırlık (g) Weight (g)	Adet/Kutu Qty / Box
PY 04	4	10	35.9	16	2.2	9.6	15.2	10	12	3	7	100
PY 06	6	12.4	39.4	17	3.2	12	17	12	14	5	9.1	50
PY 08	8	14.4	43.5	18.5	3.2	14	17.3	14	16	7	13	50
PY 10	10	17.6	50	21	4.2	18	21.5	17	19	8	22.6	25
PY 12	12	21.2	53	22.5	4.2	20.8	21	21	23	10	30.5	20

PG - Redüksiyon Tipi Nipel / Reducer



Teknik Çizim / Technical Drawing



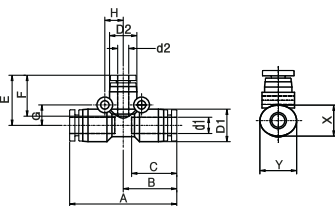
Ölçü Tablosu / Dimension Chart

MODEL	ØD1	ØP1	B	C1	ØD2	ØP2	C2	X1	Y1	X2	Y2	Orifis (mm) Orifice (mm)	Ağırlık (g) Weight (g)	Adet/Kutu Qty / Box
PG 06-04	6	12.4	34.9	17	4	10	16	12	14	10	12	3	5.2	100
PG 08-04	8	14.4	37.2	18.5	4	12.4	17	14	16	10	12	3	13.1	50
PG 08-06	8	14.4	37.2	18.5	6	12.4	17	14	16	12	14	5	6.9	50
PG 10-06	10	19.6	41	21	6	14.4	18.5	17	19	12	14	5	20.2	50
PG 10-08	10	19.6	41	21	8	14.4	18.5	17	19	14	16	7	10.9	50
PG 12-08	12	21.2	45	22.5	8	17.6	21	21	23	14	16	7	28.9	25
PG 12-10	12	21.2	45	22.5	10	17.6	21	21	23	17	19	8	16.4	25
PG 16-12	16	25.6	51.8	24.8	12	21.2	22.5	24	27	21	23	10	27.2	20

PUG - Değişik Çaplı Te Bağlantı / Different Dia of Union Tee



Teknik Çizim / Technical Drawing



Ölçü Tablosu / Dimension Chart

MODEL	D1	d1	D2	d2	A	B	C	E	F	G	H	X	Y	Orifis (mm) Orifice (mm)	Ağırlık (g) Weight (g)	Adet/Kutu Qty / Box
PUG 06-04	12.4	6	10.4	4	40.8	20.4	17	19.1	15.6	7.8	7.0	12	14	3	9	50
PUG 08-04	14.4	8	12.4	4	45.4	22.7	18.5	21	17.2	8.6	8.2	12	16	4	15.2	50
PUG 08-06	14.4	8	12.4	6	45.4	22.7	18.5	21.7	17.2	8.6	8.2	14	16	5	12	50
PUG 10-06	17.6	10	14.4	6	52.2	26.1	21	23.7	18.4	10.8	9.4	14	19	6	23.7	25
PUG 10-08	17.6	10	14.4	8	52.2	26.1	21	23.4	18.4	10.8	9.4	17	19	7	20	25
PUG 12-08	21.2	12	17.4	8	58.6	29.3	22.5	26	21	13	11.5	17	23	8	34.4	20
PUG 12-10	21.2	12	17.4	10	58.6	29.3	22.5	27.1	21	13	11.5	21	23	8	28	20