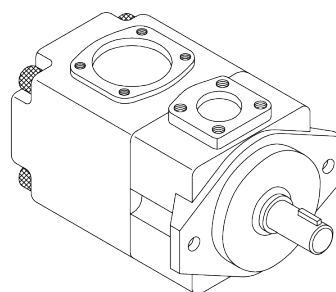


VQ Series Single Pump Ordering Code

VQ15
 VQ20 SVQ25
 VQ25 SVQ35
 VQ35 SVQ45
 VQ45 DVQ45



ORDERING CODE

VQ15	-17	F	R	A	A	-01
Model number	Displacement c.c/rev	Mounting Type	Rotation	Discharge Position	Suction Position	Shaft Type
VQ15	6,8,11,14,17, 19,23,26,31,38	F: Flange Type	View from Shaft End R: Clockwise	A: Upward (Normal) B: Downward	A: Upward (Normal) B: Downward	01:Normal
VQ20	6,8,11,14,17, 19,23,26,31, 38					
VQ25 SVQ25	18,22,26,32, 38,43,47,52, 60,65,75	L: Foot Type	L: Anti- Clockwise	R: On Right Hand L: On Left Hand	R: On Right Hand L: On Left Hand	
VQ35 SVQ35	60,66,76,82, 88,94,108, 116,125					
VQ45 SVQ45 DVQ45	136,156,189, 200,216,237					

SINGLE PUMP WEIGHT LIST (Kg)

	VQ15	VQ20	VQ25	SVQ25	VQ35	SVQ35	VQ45	DVQ45	SVQ45
Flange Type	10.3	12.3	16.7	23	36	33	52	61	66.5
Foot Type	12.7	17	21.4	31	44	41	60	92	74.5
Outlet & Inlet Flange	0.9	0.9	1.6	1.6	2.0	2.0	3.2	3.2	3.2

VQ Series Max. Continuous Pressure

VQ

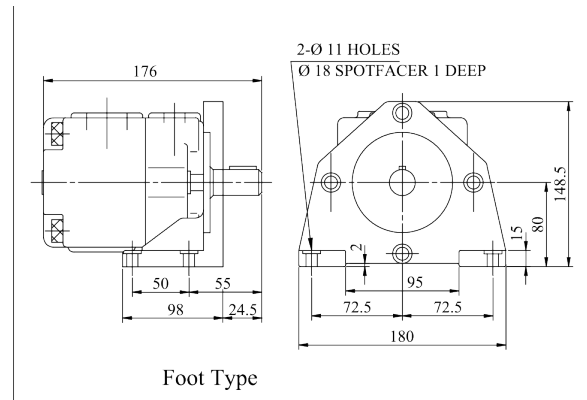
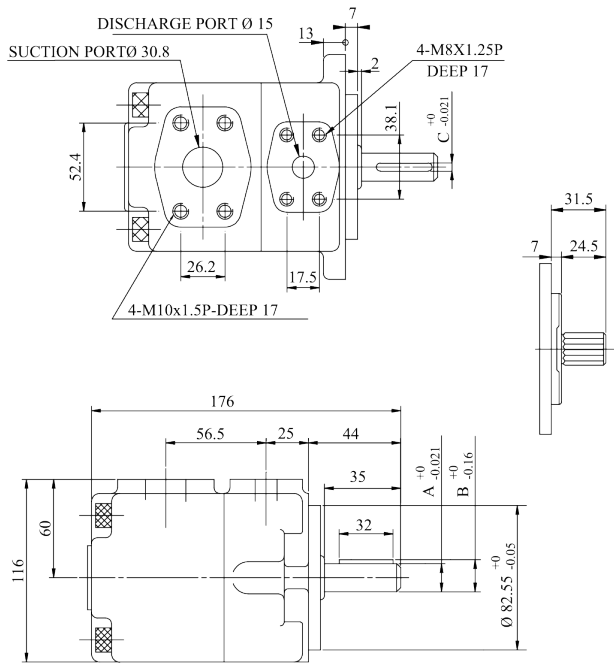
Model	Geomefric displ. (c.c/rev)	Using antiwer oil or Phosphate ester fluid		Using water glycol fluid		Using water-in-oil emulsions		Min Speed (rpm)
		Max Pressure (Kgf/cm ²)	Max Speed (rpm)	Max Pressure (Kgf/cm ²)	Max Speed (rpm)	Max Pressure (Kgf/cm ²)	Max Speed (rpm)	
VQ15	06	210	1800	160	1200	140	1200	800
	08							
	11							
	14							
	17							
	19							
	23							
	26							
	31							
38	175	1500						
		1200						
VQ20	06	210	1800	160	1200	140	1200	800
	08							
	11							
	14							
	17							
	19							
	23							
	26							
	31							
38	175	1500						
		1200						
VQ25 SVQ25	18	210	1800	160	1200	140	1200	800
	22							
	26							
	32							
	38							
	43							
	47							
	52							
	60							
	65							
75		1500						
VQ35 SVQ35	60	175	1800	160	1200	140	1200	600
	66							
	75							
	82							
	88							
	94							
	108							
	116							
	125							
VQ45 SVQ45 DVQ45	136	175	1800	140	1200	140	1200	600
	156							
	189							
	200							
	216							
	237							

VQ Series Typical Performance Characteristics

Model		Delivery Flow (ℓ /min) at no-load pressure				Running Speed (rpm)		Max Pressure (Kgf/cm ²)	
		Running Speed (rpm)				Max	Min	Cont.	Peak.
		1000	1200	1500	1800				
VQ15	06	6.2	7.4	9.3	11.2	1800	800	210	240
	08	8.1	9.7	12.1	14.6	1800	800	210	240
	11	11.2	13.4	16.8	20.1	1800	800	210	240
	14	14.3	17.1	21.5	25.7	1800	800	210	240
	17	17.1	20.5	25.6	30.7	1800	800	210	240
	19	19.2	23.0	28.8	34.5	1800	800	210	240
	23	23.3	27.9	34.9	41.9	1800	800	210	240
	26	26.1	31.3	39.1	46.9	1800	800	210	240
	31	31.1	37.3	46.6	—	1500	800	175	240
	38	38.1	45.6	—	—	1200	800	175	230
VQ20	06	6.2	7.4	9.3	11.2	1800	800	210	230
	08	8.1	9.7	12.1	14.6	1800	800	210	230
	11	11.2	13.4	16.8	20.1	1800	800	210	230
	14	14.3	17.1	21.5	25.7	1800	800	210	230
	17	17.1	20.5	25.6	30.7	1800	800	210	230
	19	19.2	23.0	28.8	34.5	1800	800	210	230
	23	23.3	27.9	34.9	41.9	1800	800	210	230
	26	26.1	31.3	39.1	46.9	1800	800	210	230
	31	31.1	37.3	46.6	—	1500	800	175	230
	38	38.1	45.6	—	—	1200	800	175	230
VQ25 SVQ25	18	18.1	21.7	27.2	32.6	1800	800	210	230
	22	22.1	26.5	33.2	39.8	1800	800	210	230
	26	26.2	31.4	39.3	47.1	1800	800	210	230
	32	32.1	38.5	48.1	57.7	1800	800	210	230
	38	38.2	45.8	57.3	68.7	1800	800	210	230
	43	43.2	51.8	64.8	77.7	1800	800	210	230
	47	47.1	56.5	70.0	85.0	1800	800	210	230
	52	52.3	62.7	78.4	94.1	1800	800	210	230
	60	60.2	72.7	90.3	108.3	1800	800	210	230
	65	65.3	78.3	97.9	117.5	1800	800	210	230
	75	75.0	90.0	112.5	—	1500	800	210	230
VQ35 SVQ35	60	60.3	72.3	90.4	108.5	1800	600	175	210
	66	66.4	79.6	99.6	119.5	1800	600	175	210
	75	76.3	91.5	114.4	137.3	1800	600	175	210
	82	82.2	98.6	123.3	147.9	1800	600	175	210
	88	88.3	105.9	132.4	158.9	1800	600	175	210
	94	94.5	113.4	141.7	170.1	1800	600	175	210
	108	108.2	129.8	162.3	194.4	1800	600	175	210
	116	116.1	139.3	174.1	208.9	1800	600	175	210
	125	124.6	149.5	186.9	—	1500	600	175	210
VQ45 SVQ45 DVQ45	136	136.8	164.0	204.0	246.0	1800	600	165	175
	156	156.2	188.0	234.0	280.0	1800	600	165	175
	189	189.5	227.0	284.0	340.0	1800	600	165	175
	200	200.0	240.0	300.0	360.0	1800	600	165	175
	216	216.0	260.0	324.0	—	1500	600	165	175
	237	237.0	285.0	355.0	—	1500	600	165	175

VQ Series Single Pump Dimensional Drawing

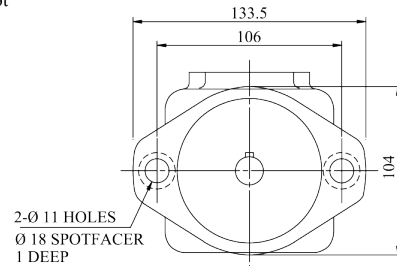
VQ15 Max. Pressure: 240 Kg/cm² (Peak)
Max. Speed: 1800 rpm



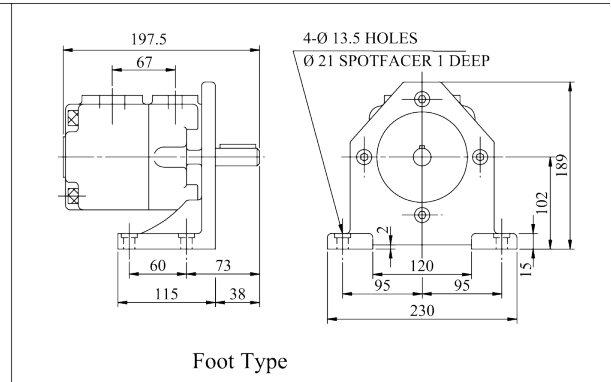
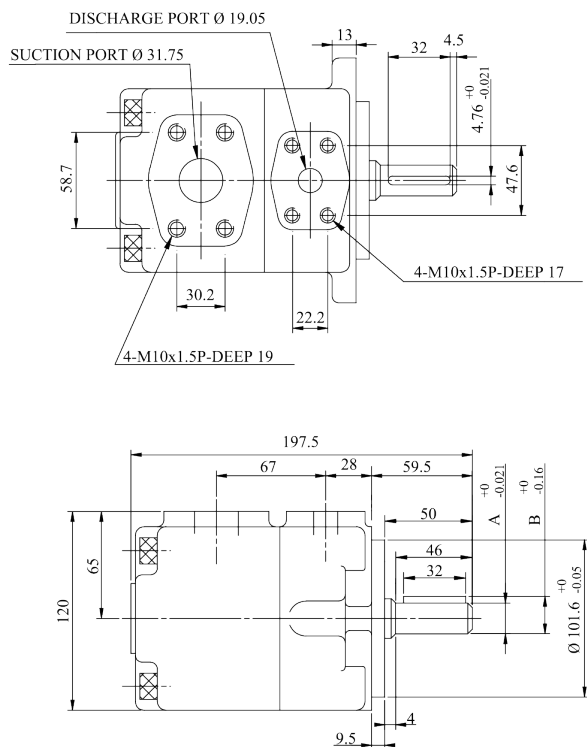
NO.03-Shaft

11-Teeth Spline
3/4" (19.05)DIA
30° pressure angle Flat root side fit

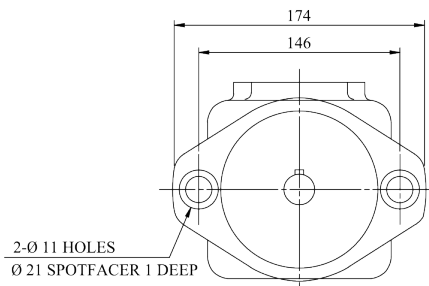
	A	B	C
NO.01-Shaft	Ø19.05	21.24	4.76
NO.03-Shaft	Spline shaft		



VQ20 Max. Pressure: 230 Kg/cm² (Peak)
Max. Speed: 1800 rpm

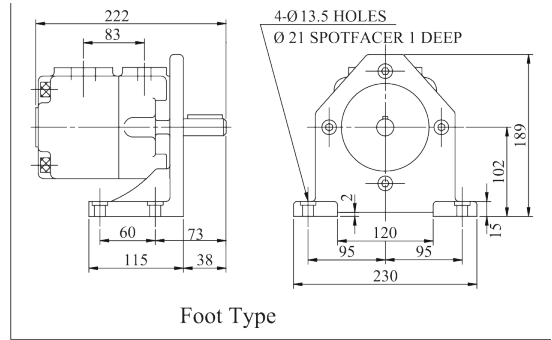
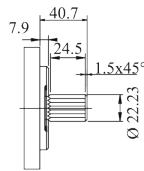
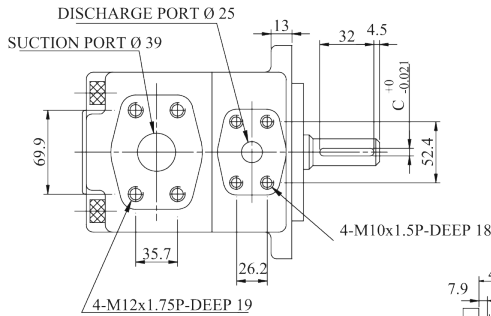


	A	B	C
NO.01-Shaft	Ø 22.23	24.5	4.76
NO.02-Shaft	Ø 25.4	28.18	6.35
NO.03-Shaft	Ø 22.23	24.94	6.35



VQ Series Single Pump Dimensional Drawing

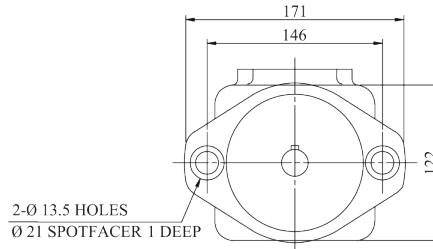
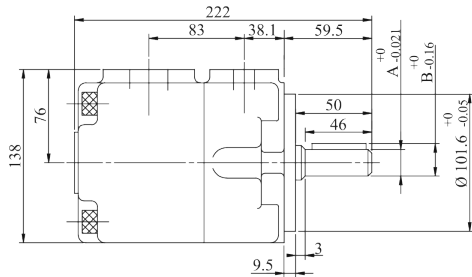
VQ25 Max. Pressure: 230 Kg/cm² (Peak)
Max. Speed: 1800 rpm



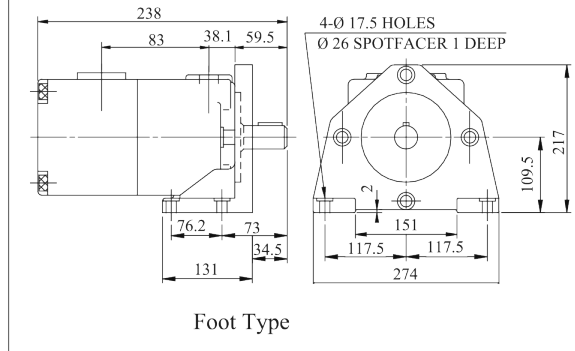
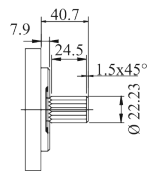
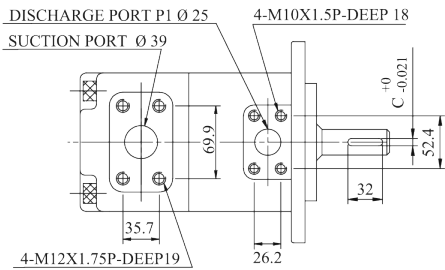
Foot Type

NO.04-Shaft
16/32 d.p. -13
teeth 30°
pressure angle
Flat root side fit.

	A	B	C
NO.01-Shaft	Ø 22.23	24.5	6.35
NO.02-Shaft	Ø 25.4	28.18	6.35
NO.03-Shaft	Ø 30	33	7
NO.04-Shaft	Spline shaft		
NO.W-Shaft	Ø 28	30.8	6.35



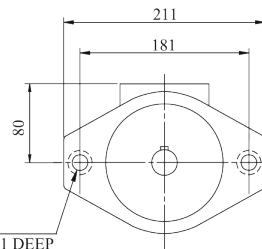
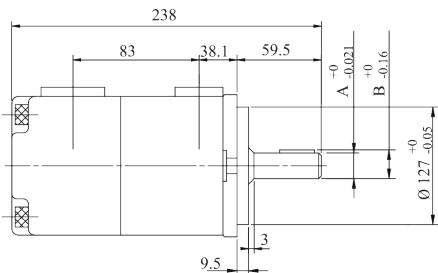
SVQ25 Max. Pressure: 230 Kg/cm² (Peak)
Max. Speed: 1800 rpm



Foot Type

NO.04-Shaft
16/32 d.p. -13
teeth 30°
pressure angle
Flat root side fit.

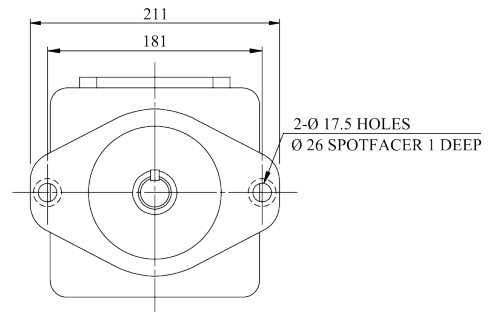
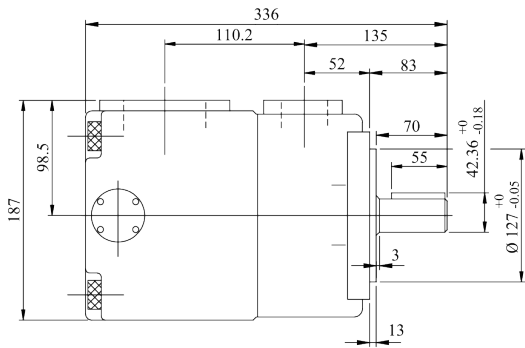
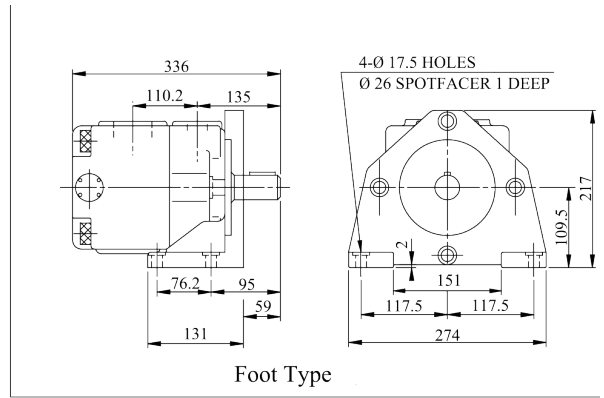
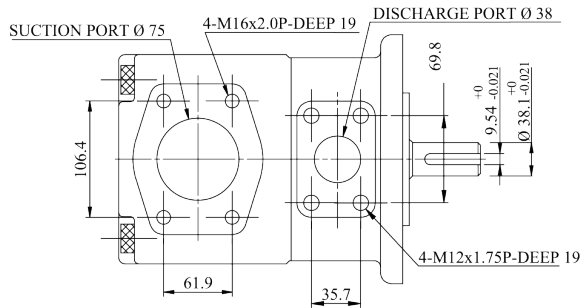
	A	B	C
NO.01-Shaft	Ø 22.23	24.5	6.35
NO.02-Shaft	Ø 25.4	28.18	6.35
NO.03-Shaft	Ø 30	33	7
NO.04-Shaft	Spline shaft		
NO.W-Shaft	Ø 28	30.8	6.35



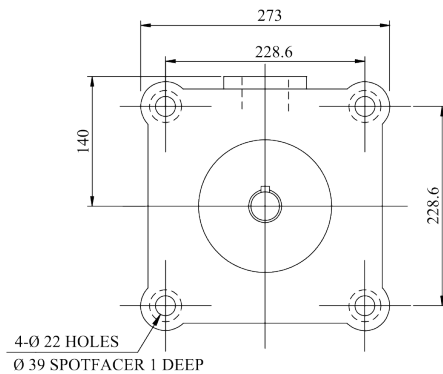
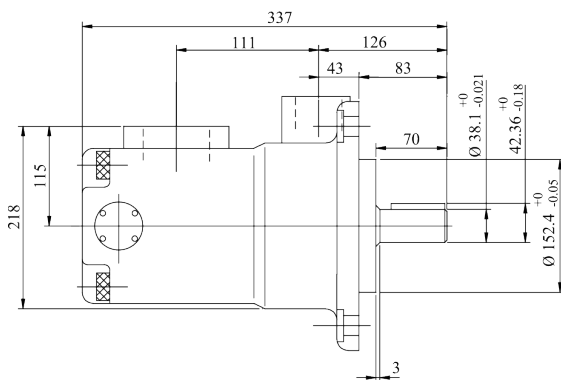
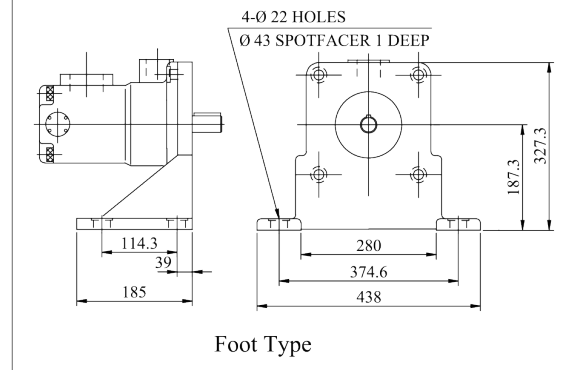
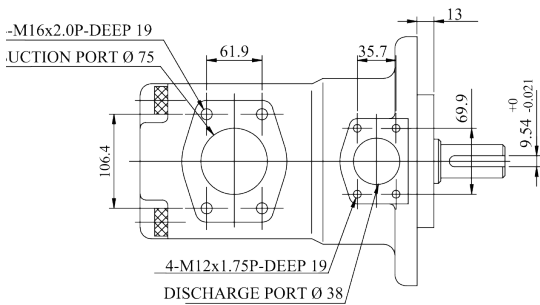
2-Ø 17.5 HOLES
Ø 26 SPOTFACER 1 DEEP

VQ Series Single Pump Dimensional Drawing

VQ45 Max. Pressure: 175 Kg/cm² (Peak)
Max. Speed: 1800 rpm

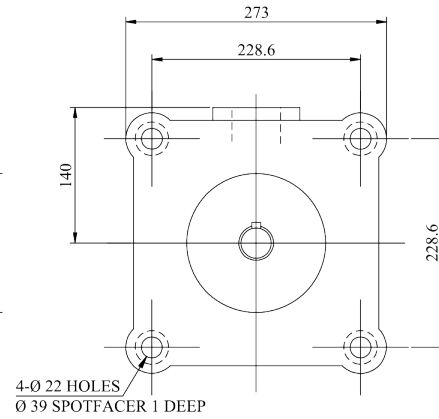
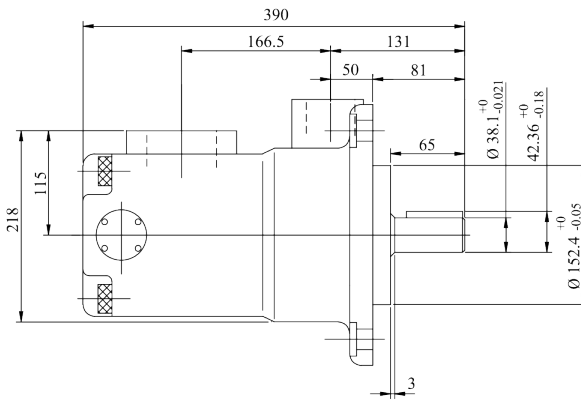
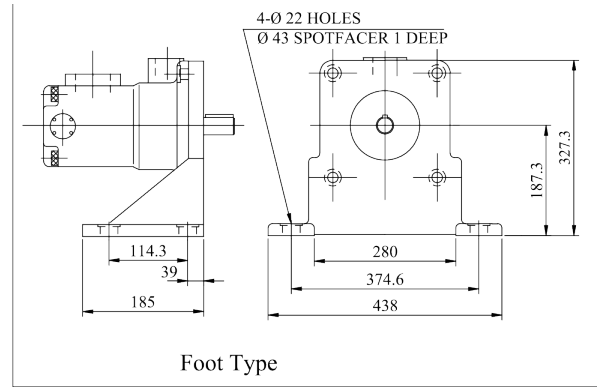
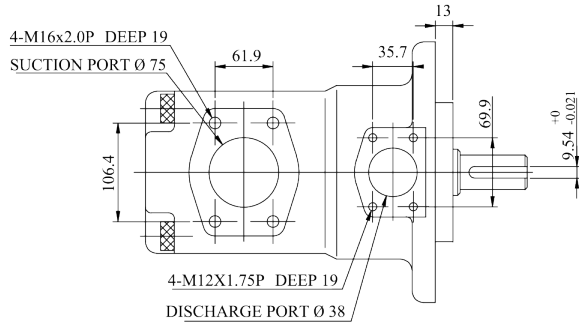


DVQ45 Max. Pressure: 175 Kg/cm² (Peak)
Max. Speed: 1800 rpm



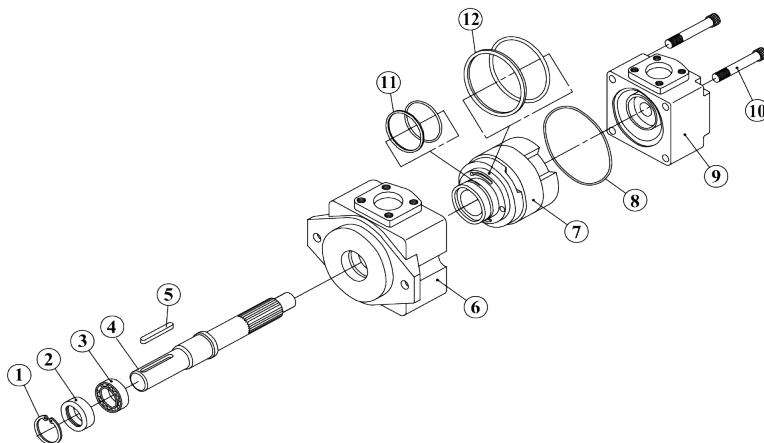
VQ Series Single Pump Decomposition Chart

SVQ45 Max. Pressure: 175 Kgf/cm² (Peak)
Max. Speed: 1800 rpm

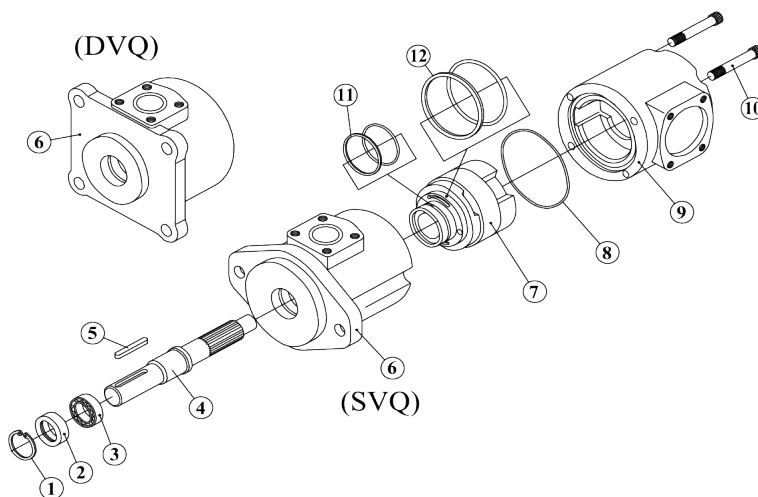


VQ Series Single Pump Decomposition Chart

VQ15
VQ20
VQ25
VQ35
VQ45



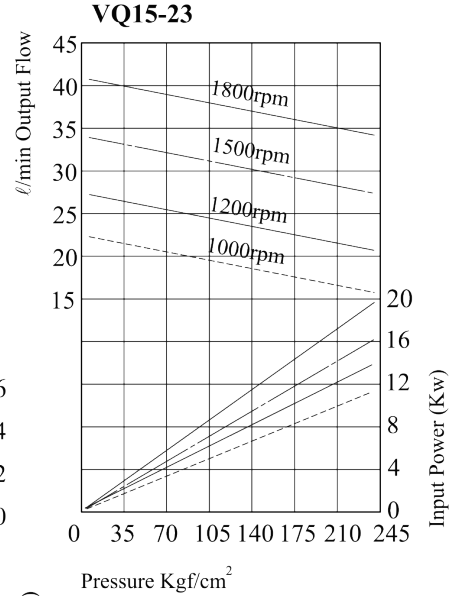
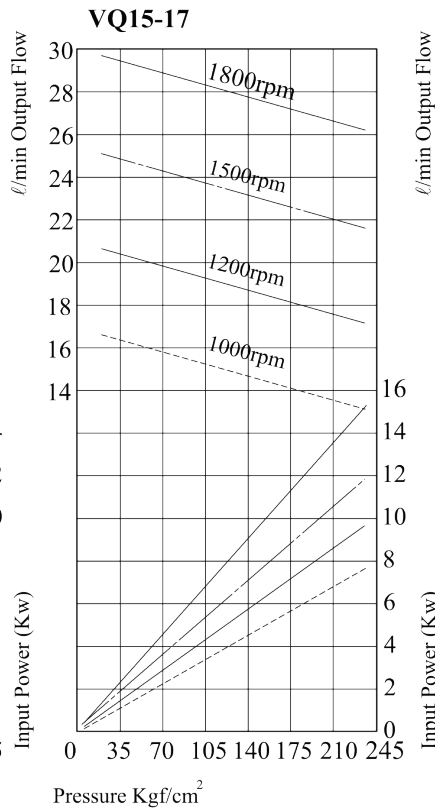
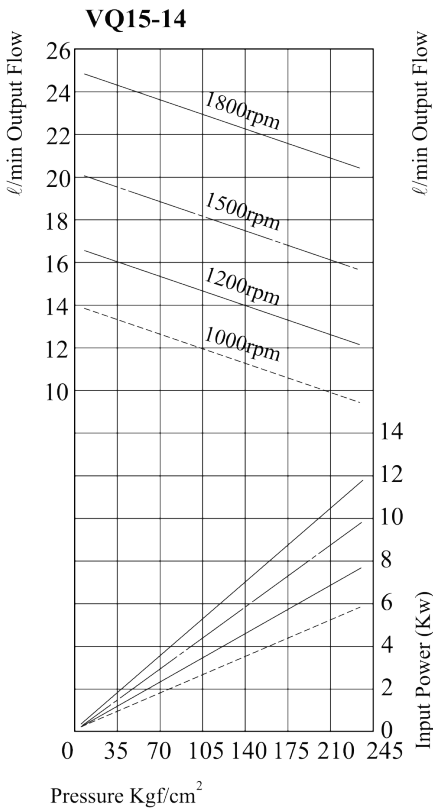
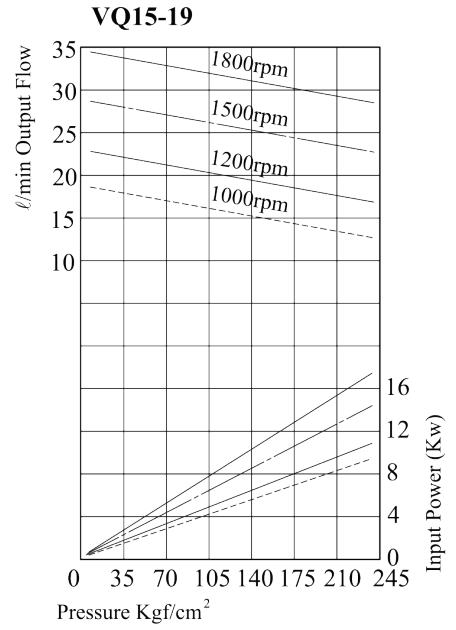
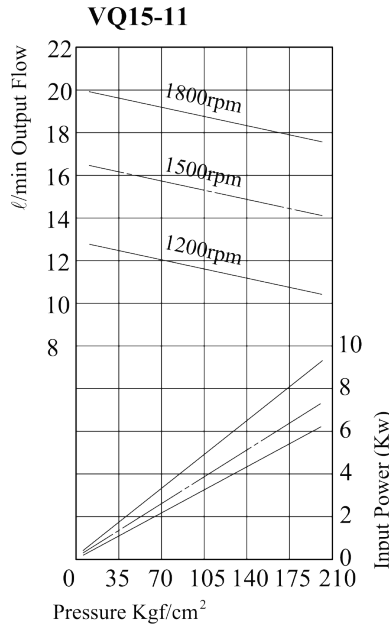
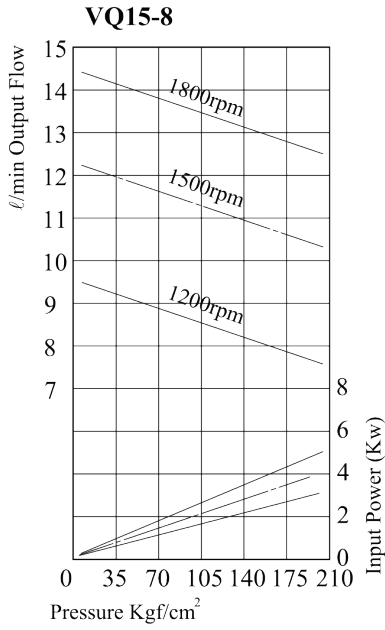
SVQ25
SVQ35
SVQ45
(DVQ45)



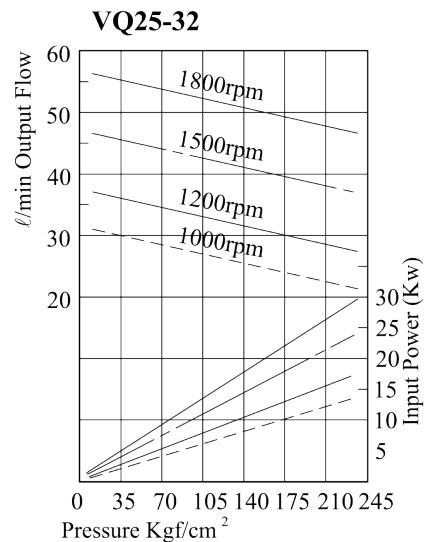
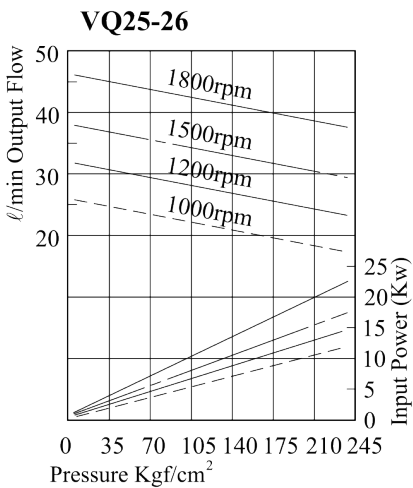
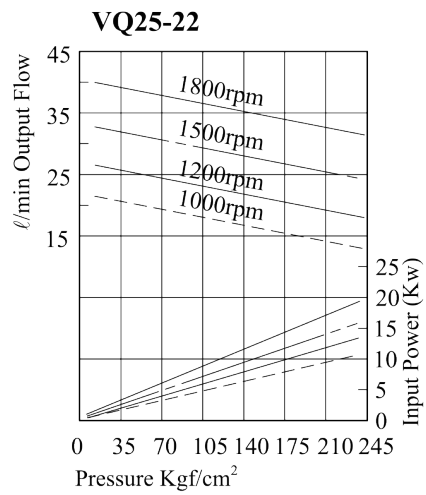
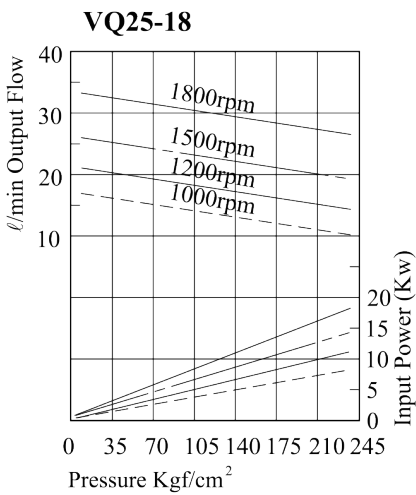
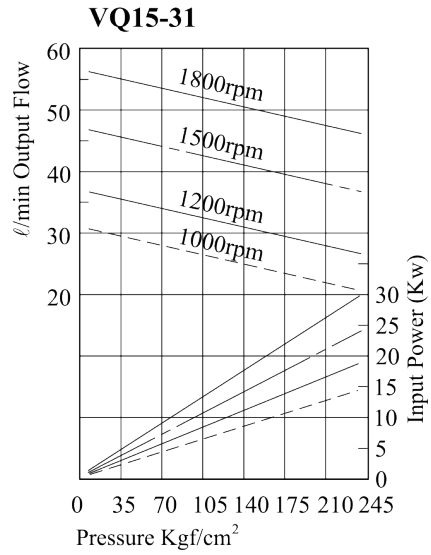
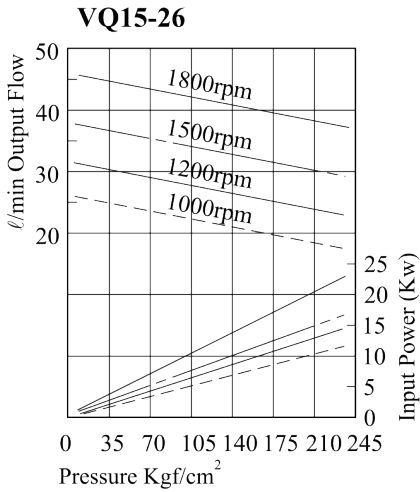
VQ Single Pump Parts List

- | | |
|--------------------|-------------------------------------|
| NO.1 Retainer Ring | NO.11 O-ring & Endless Back-Up Ring |
| NO.2 Seal | NO.12 O-ring & Endless Back-Up Ring |
| NO.3 Bearing | |
| NO.4 Shaft | |
| NO.5 Key | |
| NO.6 Housing | |
| NO.7 Cartridge Kit | |
| NO.8 O-Ring | |
| NO.9 Cover | |
| NO.10 Cap-Screw | |

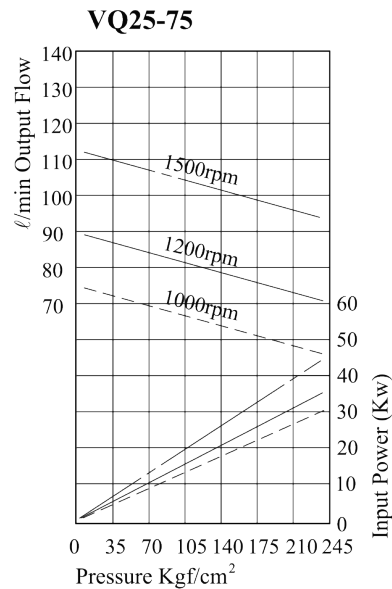
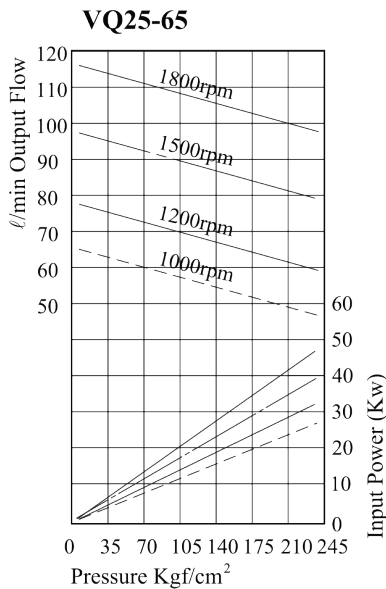
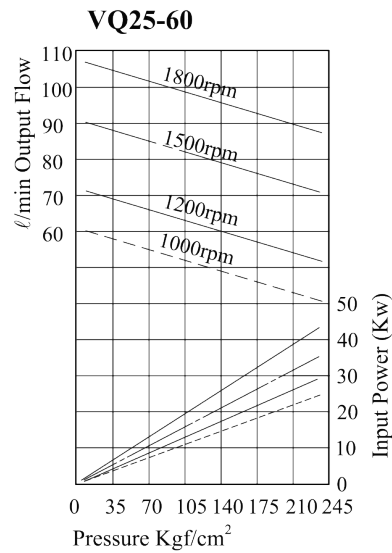
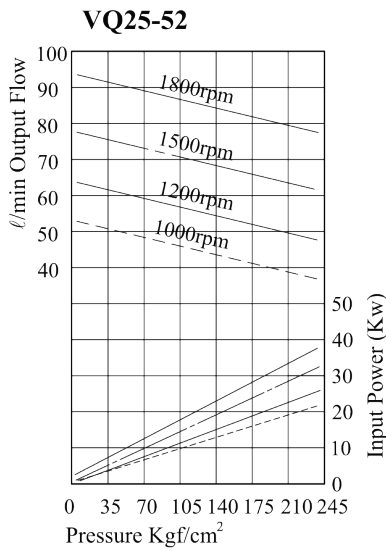
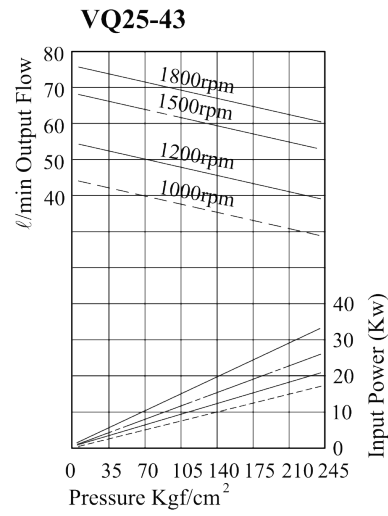
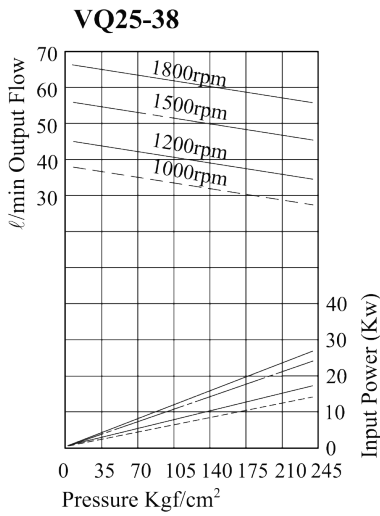
Typical Performance Characteristics (VQ Series)



Typical Performance Characteristics (VQ Series)

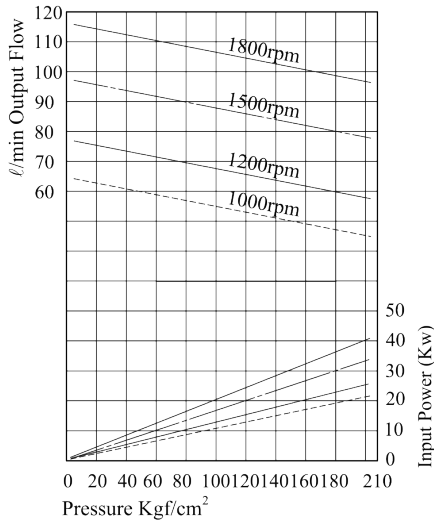


Typical Performance Characteristics (VQ Series)

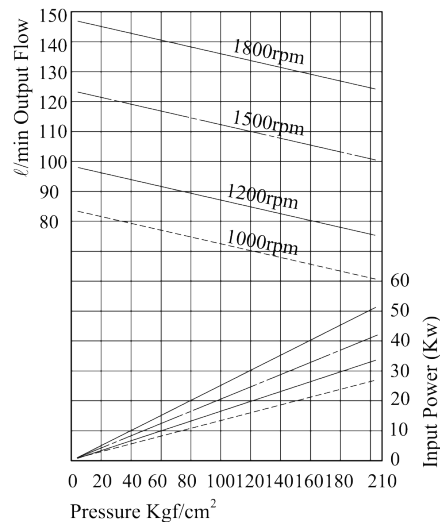


Typical Performance Characteristics (VQ Series)

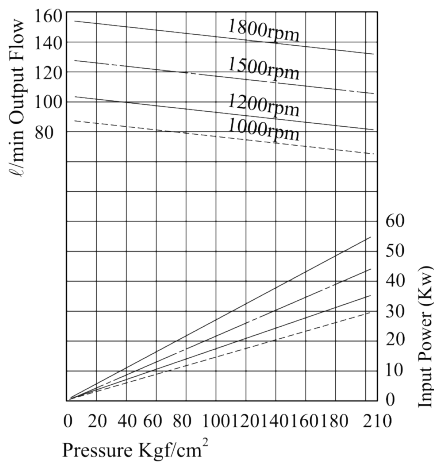
VQ35-66



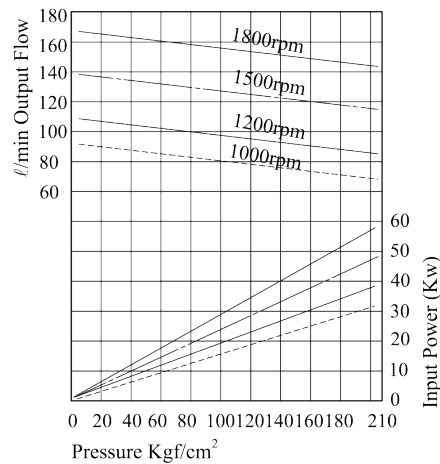
VQ35-82



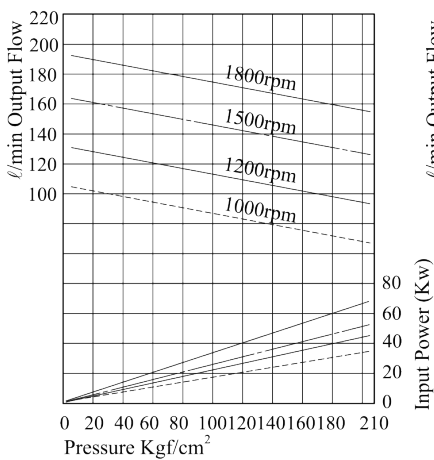
VQ35-88



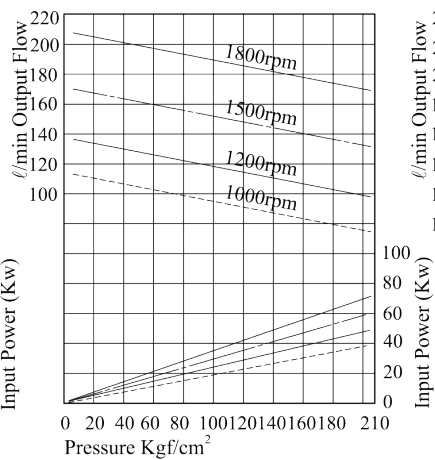
VQ35-94



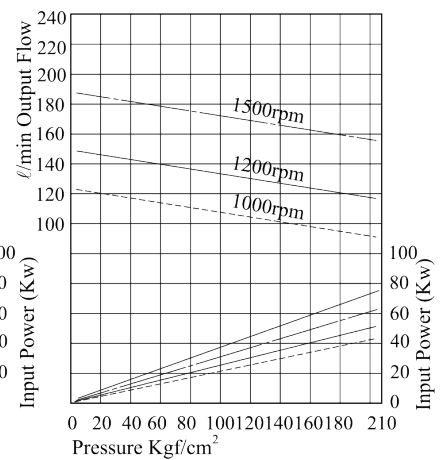
VQ35-108



VQ35-116



VQ35-125



Typical Performance Characteristics (VQ Series)

