

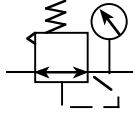
GR Serisi Regülatör / GR Series Regulator



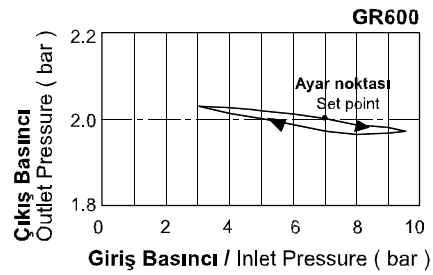
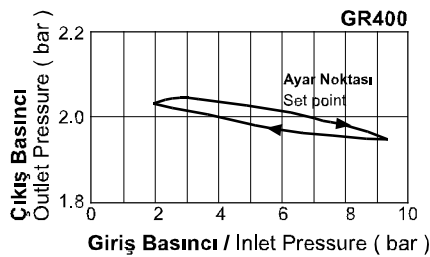
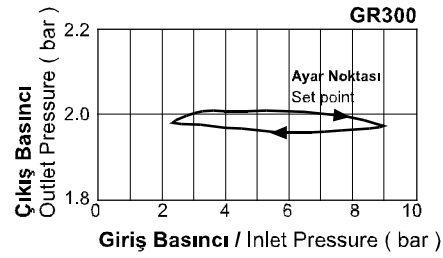
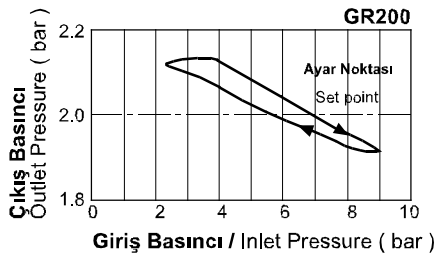
Özellikler / Specification

Model / Model	GR200-06	GR200-08	GR300-08	GR300-10	GR300-15	GR400-10	GR400-15	GR600-20	GR600-25
Akışkan / Fluid	Hava / Air								
Bağlantı Ölçüsü / Port Size	1/8"	1/4"	1/4"	3/8"	1/2"	3/8"	1/2"	3/4"	1"
Basınç Aralığı / Pressure Range	1.5~9.0bar / 0.15~0.9MPa / 21~128Psi								
Max. Çalışma Basıncı / Max. Pressure	10.0bar / 1.0MPa / 142Psi								
Test Basıncı / Proof Pressure	15.0bar / 1.5MPa / 213Psi								
Sıcaklık / Temperature	5~60°C								
Ağırlık / Weight	169g		350g		720g		1110g		

Sembol / Symbol



Basınç Diyagramları / Pressure Charts

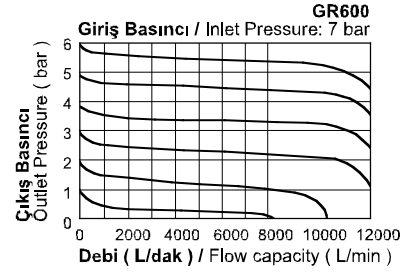
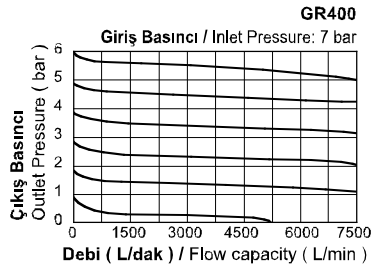
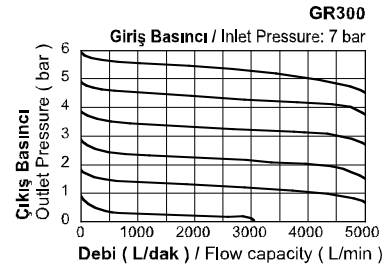
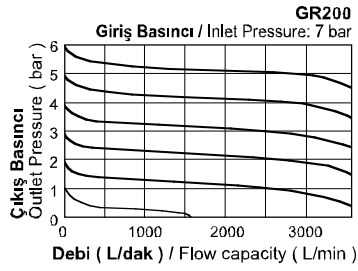


Sipariş Kodu / Ordering Code

GR200	08	L	-	-	F	1	G
Model / Model	Bağlantı / Port	Basınç / Pressure	Aksesuarlar / Accessories	Manometre / Gauge	Manometre Şekli / Gauge Shape	Skala / Scale	Diş Tipi / Thread
GR200	06: 1/8" 08: 1/4"	Boş / Blank: Standart / Standard L: Düşük Basınç / Low Pressure (4 bar)	Boş / Blank: Braketli / Bracket	Boş / Blank: Manometreli / Pressure Gauge	F: Kare / Square	1: MPa 2: Psi 3: bar	Boş / Blank: PT G: BSPP T: NPT
GR300	08: 1/4" 10: 3/8" 15: 1/2"		J: Braketsiz / No Bracket	N: Manometresiz / No Pressure Gauge	C: Yuvarlak / Round		
GR400	10: 3/8" 15: 1/2"						
GR600	20: 3/4" 25: 1"						

GR Serisi Regülatör / GR Series Regulator

Akış Diyagramları / Flow Charts



Teknik Çizimler / Technical Drawing

