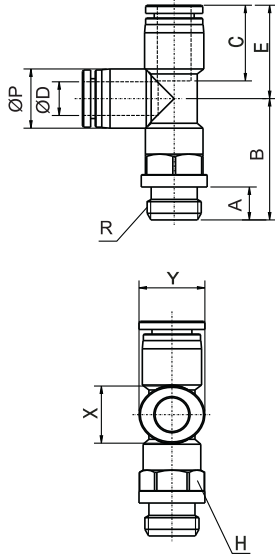


PST- Yan Bacak Te / Male Run Tee



Teknik Çizim / Technical Drawing



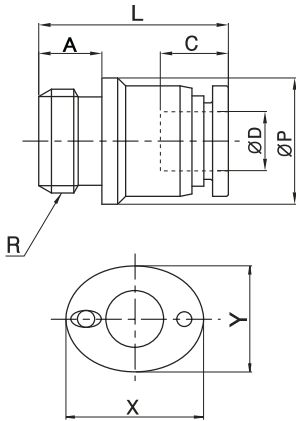
Ölçü Tablosu / Dimension Chart

MODEL	ØD	R	ØP	A	B	C	E	H	X	Y	Orifis (mm) Orifice (mm)	Ağırlık (g) Weight (g)	Adet / Kutu Qty / Box
PST 04-M5	4	M5	10.4	5.5	22.1	16	18.5	10	10	12	2	11.1	100
PST 04-M6		M6	10.4	6.5	23.1	16	18.5	10	10	12	2	11.1	100
PST 04-01		G1/8	10.4	8	24.6	16	18.5	10	10	12	2.6	13.1	100
PST 04-02		G1/4	10.4	11	27.9	16	18.5	14	10	12	2.6	19.6	50
PST 04-03		G3/8	10.4	12	28.6	16	18.5	17	10	12	2.6	25	50
PST 06-M5	6	M5	12.4	5.5	23	17	20.4	12	12	14	2	13.6	50
PST 06-M6		M6	12.4	6.5	24.5	17	20.4	12	12	14	3	13.6	50
PST 06-01		G1/8	12.4	8	25	17	20.4	12	12	14	4.6	15.6	50
PST 06-02		G1/4	12.4	11	29	17	20.4	14	12	14	4.6	23.7	50
PST 06-03		G3/8	12.4	12	31	17	20.4	17	12	14	4.6	34.5	50
PST 06-04	G1/2	12.4	15	35	17	20.4	21	12	14	4.6	40	50	
PST 08-01	8	G1/8	14.4	8	25.5	18.5	22.8	14	14	16	5	19.6	50
PST 08-02		G1/4	14.4	11	29.5	18.5	22.8	14	14	16	6	26.4	50
PST 08-03		G3/8	14.4	12	30.5	18.5	22.8	17	14	16	6	34.1	25
PST 08-04		G1/2	14.4	15	34.5	18.5	22.8	21	14	16	6	51.8	25
PST 10-01	10	G1/8	17.6	8	32	21	26	17	17	19	5	35.5	25
PST 10-02		G1/4	17.6	11	35	21	26	17	17	19	8	38.4	25
PST 10-03		G3/8	17.6	12	36	21	26	17	17	19	8	46.9	25
PST 10-04	G1/2	17.6	15	39	21	26	21	17	19	8	60.3	25	
PST 12-01	12	G1/8	21.2	8	34	22.5	28.7	21	21	23	5	48	20
PST 12-02		G1/4	21.2	11	37	22.5	28.7	21	21	23	8	52.2	20
PST 12-03		G3/8	21.2	12	38	22.5	28.7	21	21	23	9	56.1	20
PST 12-04		G1/2	21.2	15	41	22.5	28.7	21	21	23	9	67.2	20

POC- Yuvarlak Rekor Bağlantı / Round Male Straight



Teknik Çizim / Technical Drawing



Ölçü Tablosu / Dimension Chart

MODEL	ØD	R	ØP	A	B	C	H	X	Y	Orifis (mm) Orifice (mm)	Ağırlık (g) Weight (g)	Adet / Kutu Qty / Box
POC 04-M5	4	M5	10	5.5	22.2	16	2	10	12	2	6.3	100
POC 04-M6		M6	10	6.5	22.2	16	3	10	12	3	6.3	100
POC 04-01		G1/8	10	8	22.2	16	3	10	12	3	6.9	100
POC 04-02		G1/4	14	11	22.2	16	3	10	12	3	14.5	100
POC 04-03		G3/8	15	12	22.2	16	3	10	12	3	20	50
POC 06-M5	6	M5	12	5.5	24.7	17	2	12	14	2	9.3	100
POC 06-M6		M6	12	6.5	25.7	17	3	12	14	3	9.5	100
POC 06-01		G1/8	11	8	23.2	17	4	12	14	4	8.2	100
POC 06-02		G1/4	14	11	25.2	17	4	12	14	4	16.2	100
POC 06-03		G3/8	17	12	24.7	17	4	12	14	4	24.1	50
POC 08-01	8	G1/8	14	8	28.5	18.5	4	12	16	5	14.3	100
POC 08-02		G1/4	14	11	27	18.5	6	14	16	6	17.6	100
POC 08-03		G3/8	17	12	25.3	18.5	6	14	16	6	22.9	50
POC 08-04		G1/2	21	15	28.3	18.5	6	14	16	6	41.6	50
POC 10-01	10	G1/8	17	8	31	21	4	17	19	4	20.4	50
POC 10-02		G1/4	17	11	34	21	6	17	19	6	24.2	50
POC 10-03		G3/8	17	12	30	21	6	17	19	8	23	50
POC 10-04	G1/2	21	15	29.5	21	6	17	19	8	43.4	50	
POC 12-01	12	G1/8	20	8	32.5	22.5	4	21	23	4	35	50
POC 12-02		G1/4	20	11	35.5	22.5	6	21	23	6	33.4	50
POC 12-03		G3/8	21	12	31.1	22.5	8	21	23	8	31.9	50
POC 12-04		G1/2	21	15	33.1	22.5	8	21	23	8	44.5	25