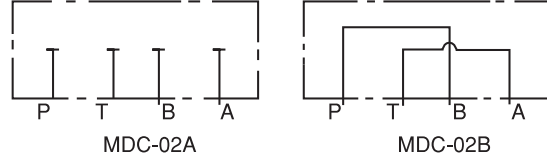


## MODÜLER BLOKLAR / MODULAR BLOCKS

### MDC - 02



#### SEMBOLLER / SYMBOLS



#### TEKNİK BİLGİ / TECHNICAL DATA

MAKSİMUM ÇALIŞMA BASINCI MAX. OPERATING PRESSURE KGF/CM <sup>2</sup> (PSI)	MAKSİMUM DEBİ MAX. FLOW LPM/GPM	AĞIRLIK WEIGHT KGS
250 (3600)	40 (10.6)	1.15 KGS

#### İŞLEVİ / FUNCTION

- \* KÖRLEME PLEYTLERİ, PLEYT MONTAJINA YARDIMCI OLUR VE GEREKSİZ DEVRELERİ KAPATIR.
- \* BY PASS PLEYTLERİ, SELENOİD YÖN VALFİ GEREKTİRMEYEN TEK YÖNLÜ DEVRELER İÇİN KULLANILIR.
- \* THE BLOCKING PLATES HELP PLATE - INSTALLATION AND CLOSE USELESS CIRCUIT.
- \* THE BY - PASS PLATES ARE USED FOR SINGLE DIRECTION CIRCUIT WHICH NEED NO SELENOID CONTROLLED DIRECTIONAL VALVES.

#### SİPARİŞ KODU / ORDERING CODE

MDC -- 02 -- A -- 50

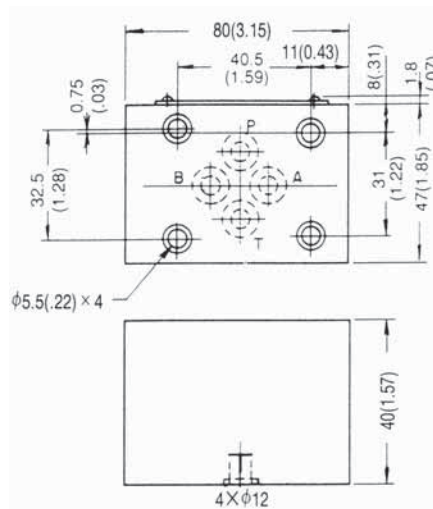
DİZAYN NUMARASI / DESIGN NUMBER

A: KÖRLEME PLEYTLERİ / BLOCKING PLATES

B: BY - PASS PLEYTLERİ / BY - PASS PLATES

DELİK ÖLÇÜSÜ / PORT SIZE  
02. 1/4"

#### ÖLÇÜLER / DIMENSIONS



BİRİM / UNITS : MM (INCH)  
AĞIRLIK / WEIGHT : 1.15 KGS