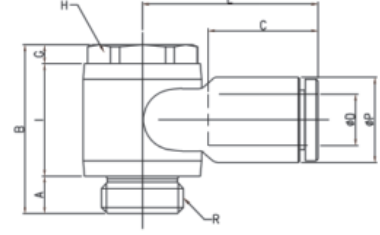
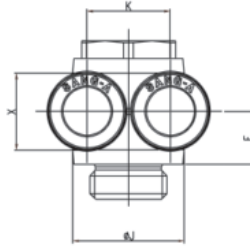


## SANG-A GPA-G Serisi İkili Döner Bağlantılar

Double Branch A



### Boyutlar

MODEL [ØD-T] Tube: (Metric) - Thread: (G)

MODEL	ØD	R	ØP	A	B	C	E	F	G	H	I	ØJ	K	X	Orifice (Ømm)	W.G(g)	Q'ty/ inbox
GPA 04G01	4	G1/8	9	5	22	14.5	20.6	7.3	2.5	13	14.5	14	9.3	8.6	3.2	14.9	50
GPA 04G02	4	G1/4	9	6	27	14.5	22.6	9	3	16	18	19	9.3	8.6	3.2	25.5	50
GPA 04G03	4	G3/8	9	7	32	14.5	24.6	10.5	4	20	21	22.4	9.3	8.6	3.2	42.9	25
GPA 06G01	6	G1/8	11.2	5	22	15.5	22	7.3	2.5	13	14.5	14	11.4	11	5	16.6	50
GPA 06G02	6	G1/4	11.2	6	27	15.5	23.5	9	3	16	18	19	11.4	11	5	27.0	50
GPA 06G03	6	G3/8	11.2	7	32	15.5	25.7	10.5	4	20	21	22.4	11.4	11	5	44.4	25
GPA 08G01	8	G1/8	13.6	5	22	17.8	25.6	8	2.5	13	14.5	14	14.2	13	5.2	19.4	25
GPA 08G02	8	G1/4	13.6	6	27	17.8	28.1	9	3	16	18	19	14.2	13	6.8	29.8	25
GPA 08G03	8	G3/8	13.6	7	32	17.8	29.8	10.5	4	20	21	22.4	14.2	13	7	46.1	25
GPA 08G04	8	G1/2	13.6	8.5	35.5	17.8	32.1	11	5	24	22	27	14.2	13	7	76.4	20
GPA 10G02	10	G1/4	16.3	6	27	19.4	27.5	9.7	3	16	18	19	17	16	7.3	31.0	20
GPA 10G03	10	G3/8	16.3	7	32	19.4	29.6	10.5	4	20	21	22.4	17	16	9	50.0	20
GPA 10G04	10	G1/2	16.3	8.5	35.5	19.4	31.5	11	5	24	22	27	17	16	9	79.2	10
GPA 12G03	12	G3/8	19.7	7	32	22.4	32.4	11.9	4	20	21	22.4	20	19.5	8.7	58.2	10
GPA 12G04	12	G1/2	19.7	8.5	35.5	22.4	34.9	11.9	5	24	22	27	20	19.5	10	87.6	10