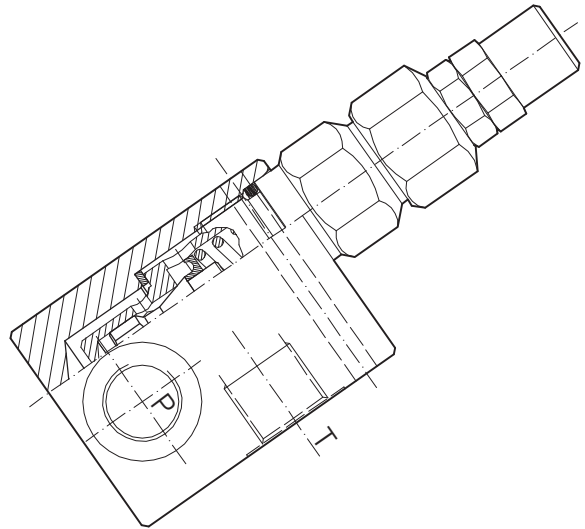
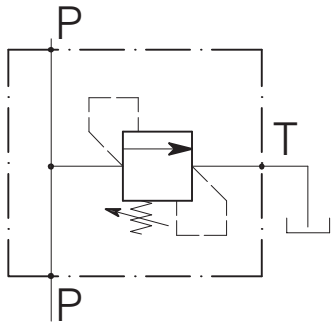


VMP-35-...-C-...-L

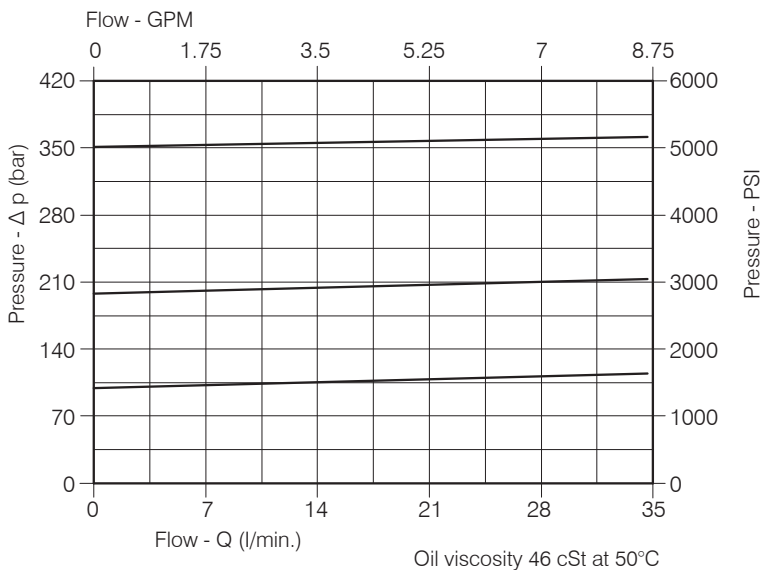
CARTRIDGE RELIEF, DIRECT ACTING POPPET TYPE VALVE WITH IN LINE BODY



Performance

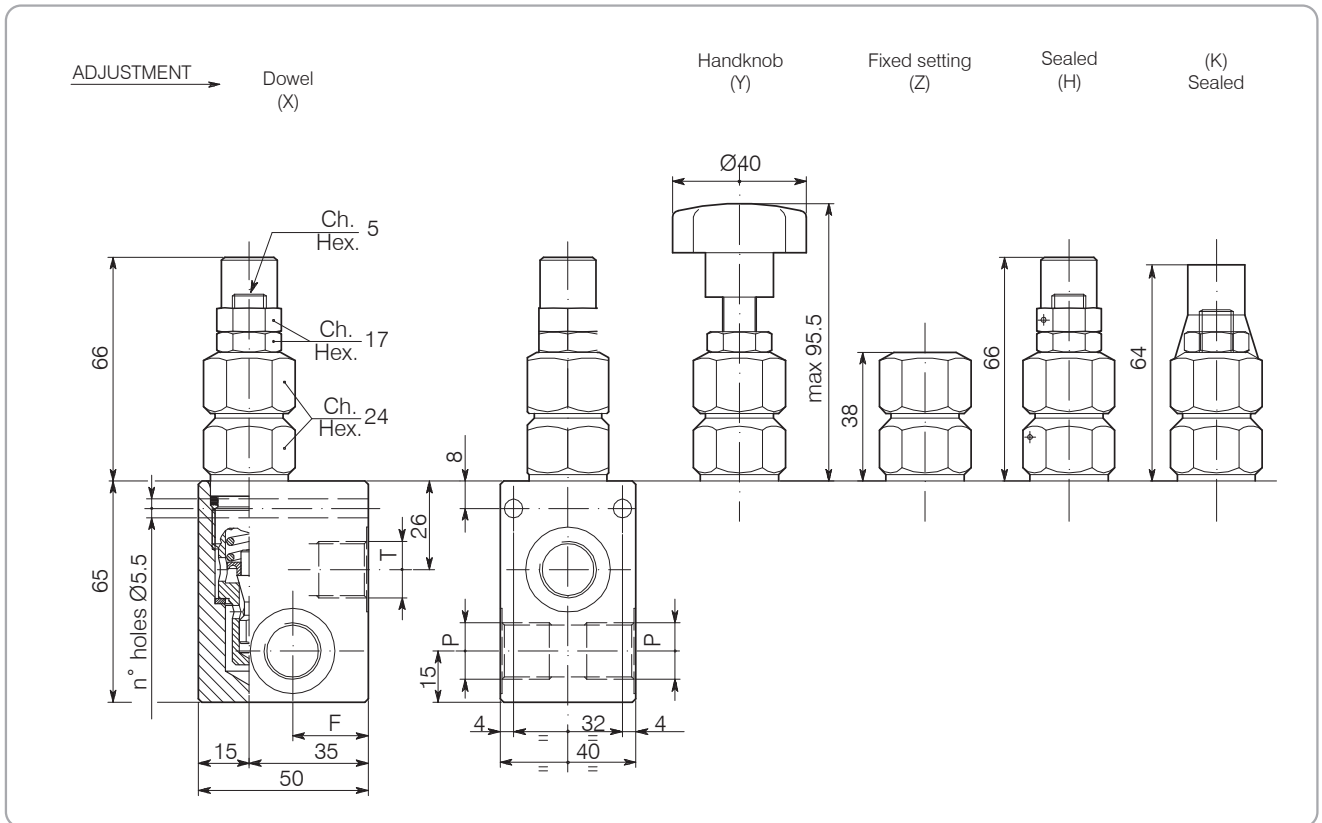
Rated size	DN 6
Min/Max flow-rate	35 l/min - 5.3 GPM
Max working pressure	350 bar - 5075 PSI
Max setting pressure	350 bar - 5075 PSI
Room temperature	-30°C + 50°C
Oil temperature	-30°C + 80°C
Recommended filtration	30 ÷ 50 micron
Weight 3/8" GAS	0.522 Kg
Weight 1/2" GAS	0.505 kg

Performance Details



VMP-35-...-C-...-L

Hydraulic valves and integrated components



Dimensions

Setting Range			F	Port size P-T GAS (BSPP)
15	133	134	22	3/8"
16	138	139	20	1/2"

Ordering Code

2 • 1 5 • 0 • X • 0

Setting Range					
15		133		134	
16		138		139	
Setting range 5÷100 bar (blue spring)		Setting range 10÷210 bar (green spring)		Setting range 20÷350 bar (yellow spring)	
Std. bar setting (Q=5 l/1')	Pressure rise - turn of screw 80 bar	Std. bar setting (Q=5 l/1')	Pressure rise - turn of screw 180 bar	Std. bar setting (Q=5 l/1')	Pressure rise - turn of screw 320 bar

Adjustment

- X : Dowel
- Y : Handknob
- Z : Fixed setting
- H : Sealed
- K : Sealed