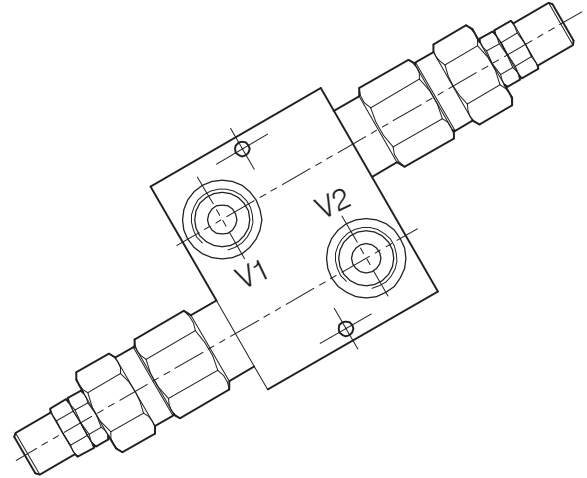
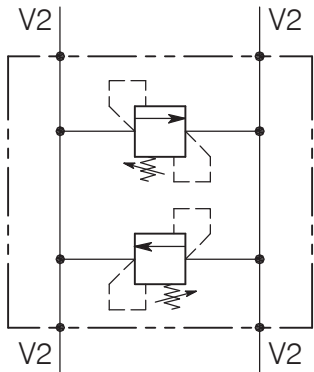


**VMP-DI-...-...-L**

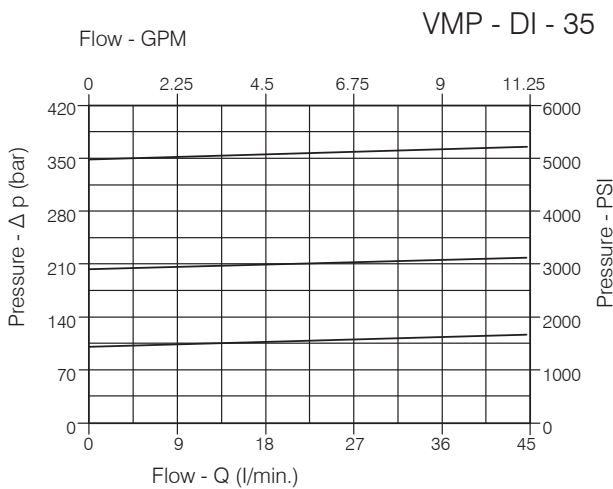
**CARTRIDGE RELIEF, DIRECT ACTING POPPET TYPE VALVE WITH IN LINE BODY**



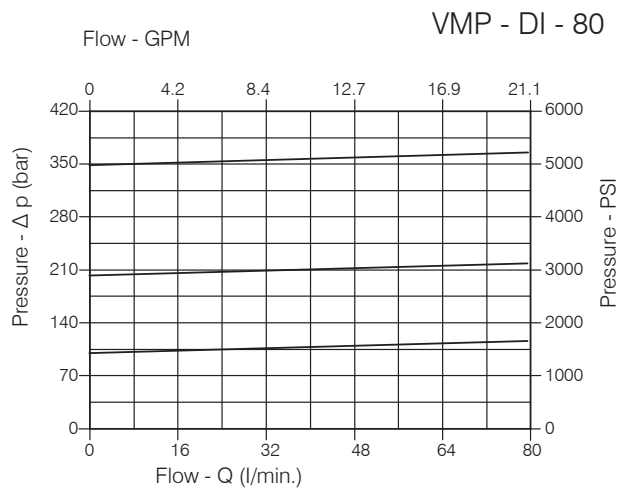
**Performance**

Min/Max rated size	DN 8/10
Min/Max flow-rate	1/80 l/min - 0.26/21 GPM
Max working pressure	350 bar - 5075 PSI
Max setting pressure	350 bar - 5075 PSI
Room temperature	-30°C + 50°C
Oil temperature	-30°C + 80°C
Recommended filtration	30 micron
Tightening torque	70 ÷ 85 Nm
Weight 3/8" GAS	0.882 Kg
Weight 3/4" GAS	1.582 Kg

**Performance Details**



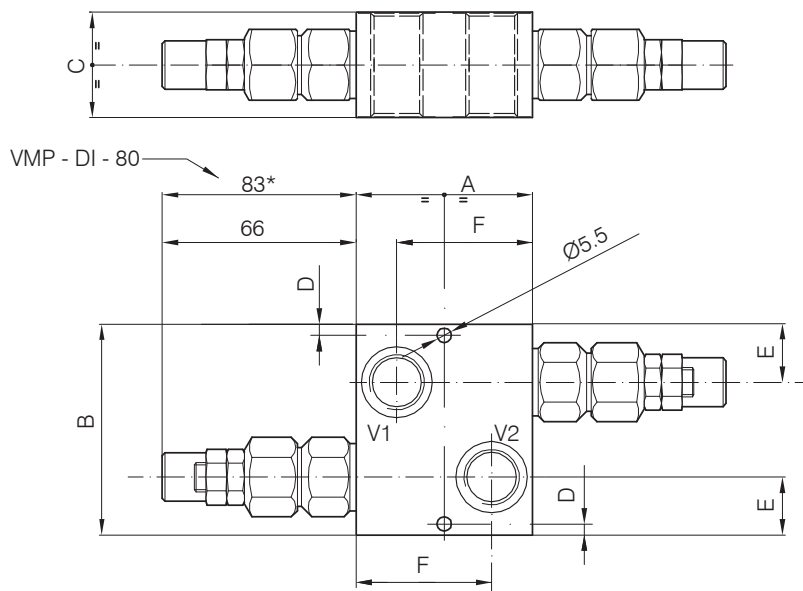
Oil viscosity 46 cSt at 50°C



Oil viscosity 46 cSt at 50°C

VMP-DI-...-...-L

Hydraulic valves and integrated components



Dimensions

Setting Range			A	B	C	D	E	F	Port size P-T GAS (BSPP)
051	281	282	80	60	40	5.5	18	64	3/8"
052	283	284							1/2"

Setting Range					A	B	C	D	E	F	Port size P-T GAS (BSPP)
053	285	286	287	288	80	60	40	5.5	18	64	3/4"
			332	3/4"							

Ordering Code

Setting Range					
051		281		282	
052		283		284	
Setting range 5÷100 bar (blue spring)		Setting range 10÷210 bar (green spring)		Setting range 20÷350 bar (yellow spring)	
Std. bar setting (Q=5 l/1')	Pressure rise - turn of screw (-)	Std. bar setting (Q=5 l/1')	Pressure rise - turn of screw (-)	Std. bar setting (Q=5 l/1')	Pressure rise - turn of screw (-)
70 bar		140 bar		280 bar	



Setting Range									
053		285		286		287		288	
								332	
Setting range 5÷50 bar (blue spring)		Setting range 10÷100 bar (black spring)		Setting range 10÷150 bar (green spring)		Setting range 25÷250 bar (yellow spring)		Setting range 40÷350 bar (red spring)	
Std. bar setting (Q=5 l/1')	Pressure rise - turn of screw (-)	Std. bar setting (Q=5 l/1')	Pressure rise - turn of screw (-)	Std. bar setting (Q=5 l/1')	Pressure rise - turn of screw (-)	Std. bar setting (Q=5 l/1')	Pressure rise - turn of screw (-)	Std. bar setting (Q=5 l/1')	Pressure rise - turn of screw (-)
40 bar		80 bar		120 bar		210 bar		320 bar	