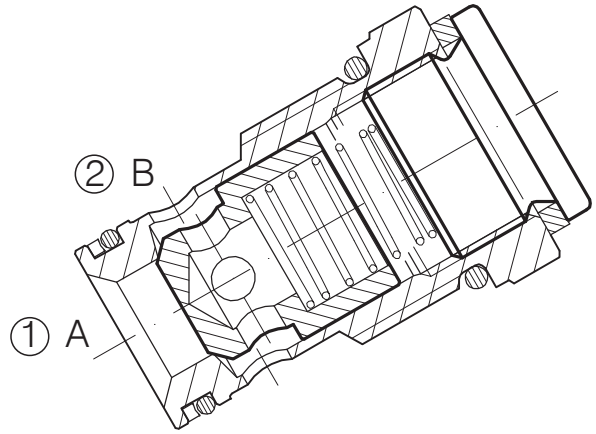
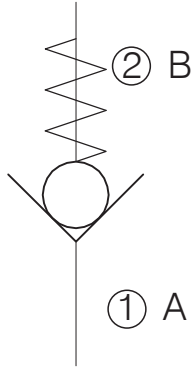


VNR-C-34-100-...

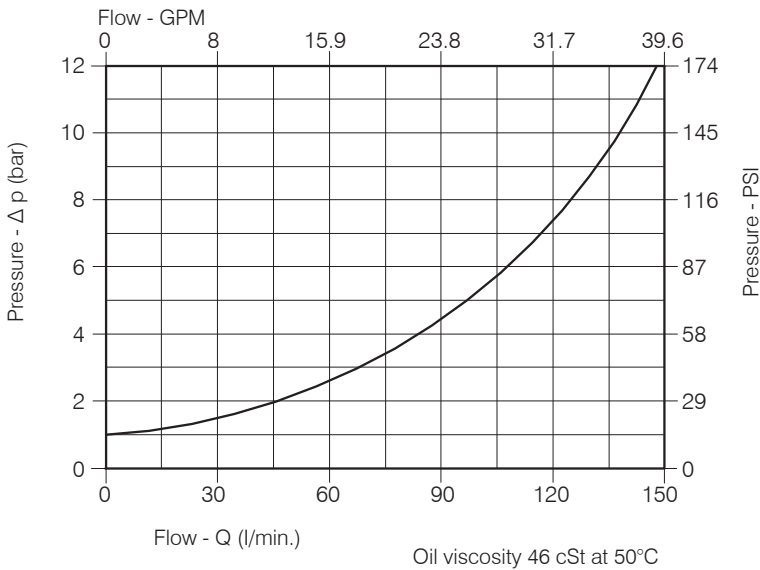
CARTRIDGE CHECK VALVE



Performance

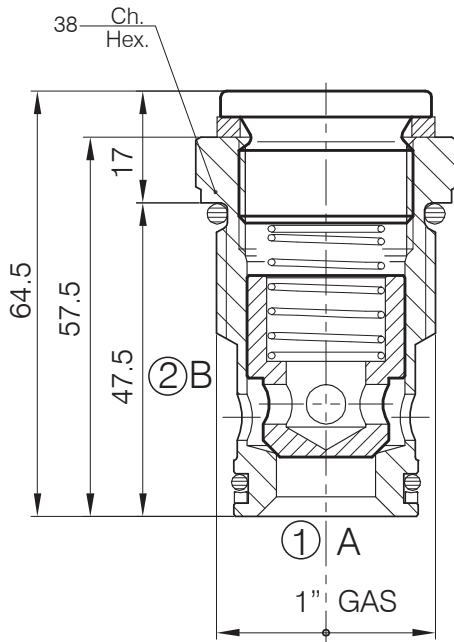
Rated size	DN 16
Min/Max flow-rate	1/150 l/min - 0.26/39.6 GPM
Max working pressure	350 bar - 5075 PSI
Room temperature	-30°C + 50°C
Oil temperature	-30°C + 80°C
Recommended filtration	50 micron
Tightening torque	148 ÷ 158 Nm
Weight	0.292 Kg

Performance Details

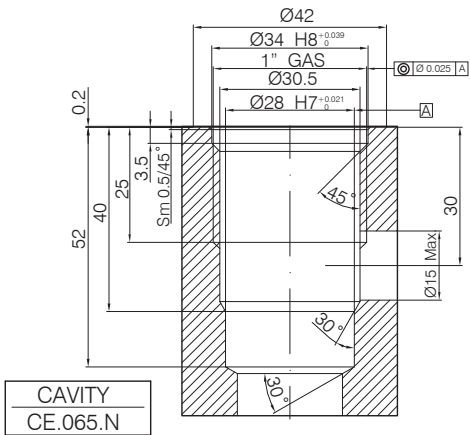


VNR-C-34-100-...

Hydraulic valves and integrated components



Cavity CE.065.N



The valve seat should be perfectly tooled

Ordering Code

3 . 1 5 5 . 0 . J . 0

Cracking pressure

- J : 1 bar
- Spring (black)
- W : 6-8 bar
- Spring (yellow)