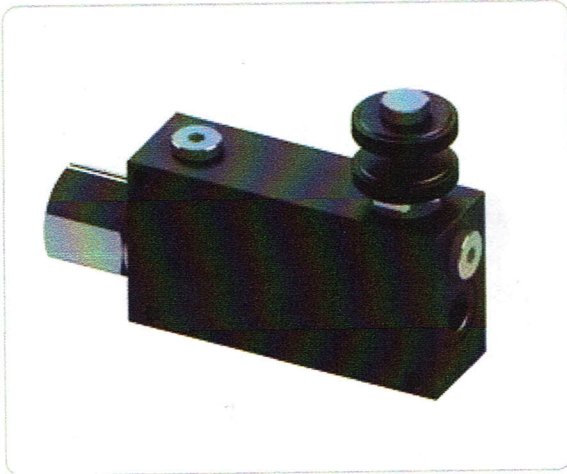


VPP

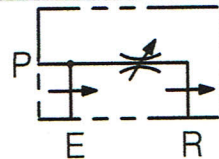
3 ways flow control valves - pressure compensated, exceeding flow to pressure



Ordering Code

		01	02	03
		VPP		V
01	(3 ways flow control valves - pressure compensated, exceeding flow to pressure)			VPP
02	Dimensione (Size)	BSPP3/8		380
		BSPP1/2		120
		BSPP3/4		340
03	Regolazic (Setting)	Volantino		V

Hydraulic circuit



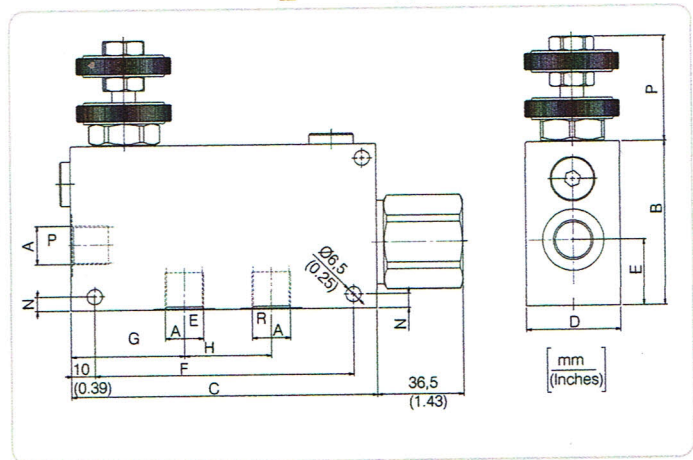
Technical data

Mineral oil	ISO 6743/4 (DIN 51524)
Oil viscosity	15-250 mm ² /s (15 to 250 cSt)
Max contamination index with filter	ISO 4406:1999 Classe 19/17/14
Oil temperature	-20°C +80°C -4°F + 176°F
Ambient temperature	-20°C +50°C -4°F + 122°F

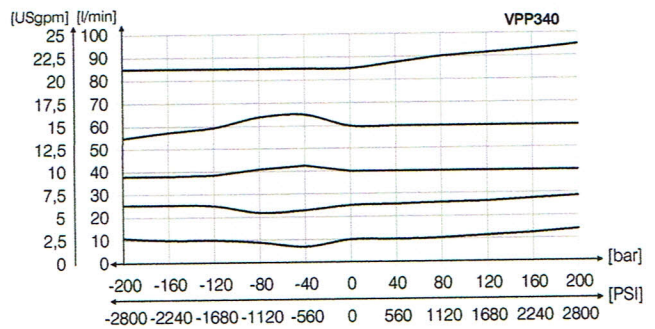
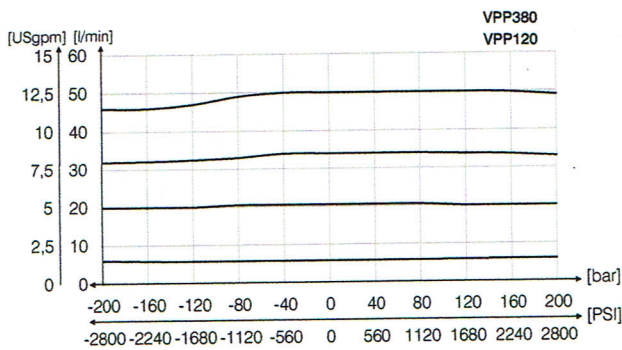
It is necessary a filter use to protect the valve (advised filtration 15 μm)

Portata massima l/min - Max flow USgpm

50 l/min con 30 l/min in R (13,3 USgpm with 8 USgpm in R)	380
90 l/min con 50 l/min in R (24 USgpm with 13,3 USgpm in R)	120
150 l/min con 80 l/min in R (40 USgpm with 21,3 USgpm in R)	340



Performances



Technical characteristics

Code	A	Portata max (l/min) Max flow (USgpm)	Pressione max (bar) Max pressure (PSI)	B	C	D	E	F	G	H	L	N	P	S	Approx weight (lb)
VPP380	BSPP3/8	50(13.2)	250 (3625)	70 (2.76)	130 (5.12)	40 (1.57)	28 (1.10)	110 (4.33)	48 (1.89)	37 (1.46)	58 (2.28)	6 (0.24)	41 (1.61)	6,5 (0.26)	1,30(2.87)
VPP120	BSPP1/2	90(23.8)		90 (3.54)	155 (6.10)	50 (1.97)	35 (1.38)	135 (5.31)	57 (2.24)	44 (1.73)	/	7 (0.28)	35 (1.38)	8,5 (0.33)	2,48(5.46)
VPP340	BSPP3/4	150(39.6)													