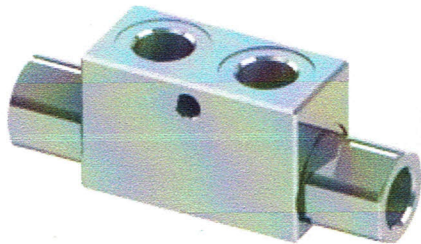


VRDE

Double acting pilot check valves

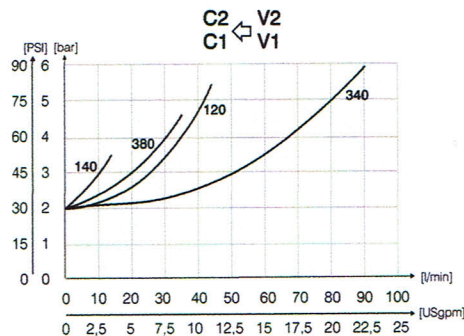
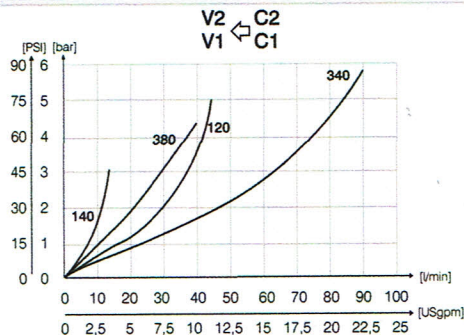
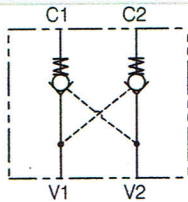


Ordering Code

		01	02	
		VRDE		
01		(Double acting pilot check valves)		VRDE
02	Dimensione Size	BSPP1/4		140
		BSPP3/8		380
		BSPP1/2		120
		BSPP3/4		340

Performances

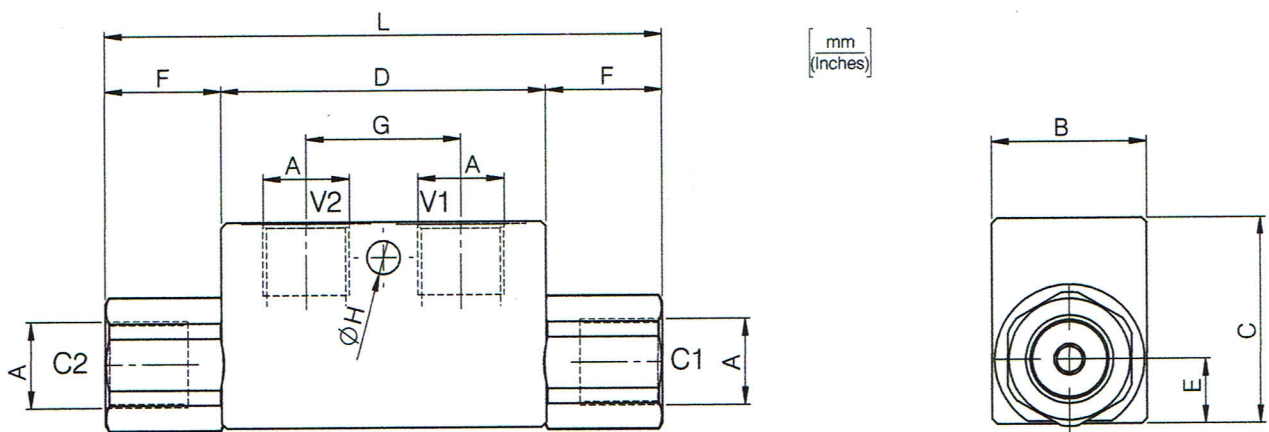
Hydraulic circuit



Technical data

Mineral oil	ISO 6743/4 (DIN 51524)
Oil viscosity	15-250 mm ² /s (15 to 250 cSt)
Max contamination index with filter	ISO 4406:1999 Classe 19/17/14
Oil temperature	-20°C +80°C -4°F + 176°F
Ambient temperature	-20°C +50°C -4°F + 122°F

It is necessary a filter use to protect the valve (advised filtration 15 μm)



Technical characteristics

Code	A	Portata max (l/min) Max flow (USgpm)	Pressione max (bar) Max pressure (PSI)	B	C	D	E	F	G	H	L	Approx weight (lb)	Pilot ratio	
VRDE140	BSPP1/4	15 (4)	320 (4640)	30(1.18)	40(1.57)	63(2.48)	13(0.51)	21,5 (0.85)	30(1.18)	6,5(0.26)	106(4.17)	0,64(1.41)	1:4	
VRDE380	BSPP3/8	35(9.2)		30(1.18)	40(1.57)	82(3.23)	16,5(0.65)				31,5(1.24)	36(1.42)		145(5.71)
VRDE120	BSPP1/2	45(11.9)	300 (4350)	40(1.57)	60(2.36)	100(3.94)	22,5(0.89)	46(1.81)	50(1.97)	8,5(0.33)	192(7.56)	2 (4.41)		1:2.9
VRDE340	BSPP3/4	70(18.5)		40(1.57)	60(2.36)	100(3.94)	22,5(0.89)	46(1.81)	50(1.97)	8,5(0.33)	192(7.56)	2 (4.41)		