

VSC120 SABİT İNİŞ KONTROL KATRIÇİ

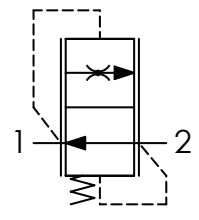
VSC120 SERIES



Speciality

Mineral oil	ISO 6743/4
Oil viscosity	15-250 mm ² /s
Max contamination index with filter	ISO 4406:1999
Oil temperature	-20°C +80°C
Ambient temperature	-20°C +50°C
It is necessary a filter use to protect the valve (advised filtration 15 μm)	

Control Port(s)



Ordering Code

1	2
VCC120	

Performance

Type 61100033

(Approx weight)
0,21 kg(0.46 lb)

Type 61100094

(Approx weight)
0,21 kg(0.46 lb)

01	(Fixed flow control valves - pressure compensated)	VSC120
02	Controlled flow at 100 bar ± 10 %	9 l/min (2.38 USgpm) 9
		12 l/min (3.17 USgpm) 12
		17 l/min (4.49 USgpm) 17
		21 l/min (5.54 USgpm) 21
		27 l/min (7.1 USgpm) 27
		32 l/min (8.45 USgpm) 32
		40 l/min (10.56 USgpm) 40
		47 l/min (12.4 USgpm) 47

Type	Max flow l/min - USgpm	Max pressure bar / PSI	Tightening torque Nm-lbf-ft	Approx weight kg-lb
VSC120	47(12.4)	250(3625)	10(7.5)	0,050(0.11)

Dimensions

(Cavity)

[mm]
[inches]

(Type)	Ø C
VSC1209	2,5 (0.10)
VSC12012	3 (0.12)
VSC12017	3,5 (0.14)
VSC12021	4 (0.16)
VSC12027	4,5 (0.18)
VSC12032	5 (0.20)
VSC12040	5,5 (0.22)
VSC12047	6 (0.24)