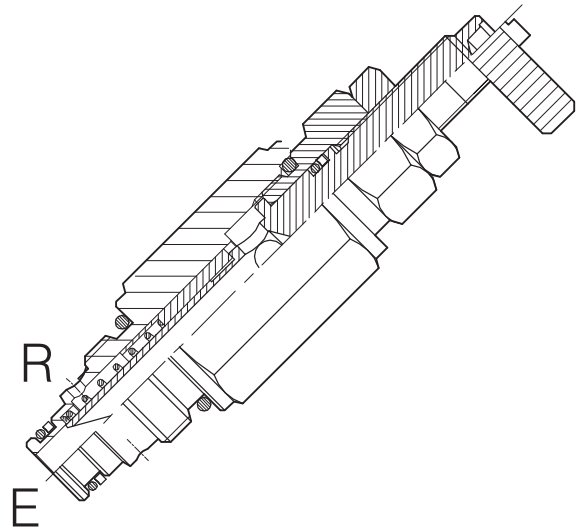
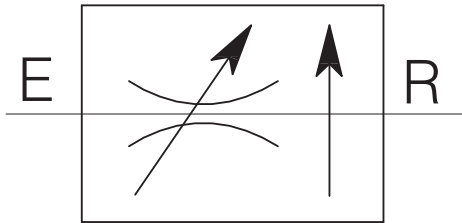


VSTC-20-...

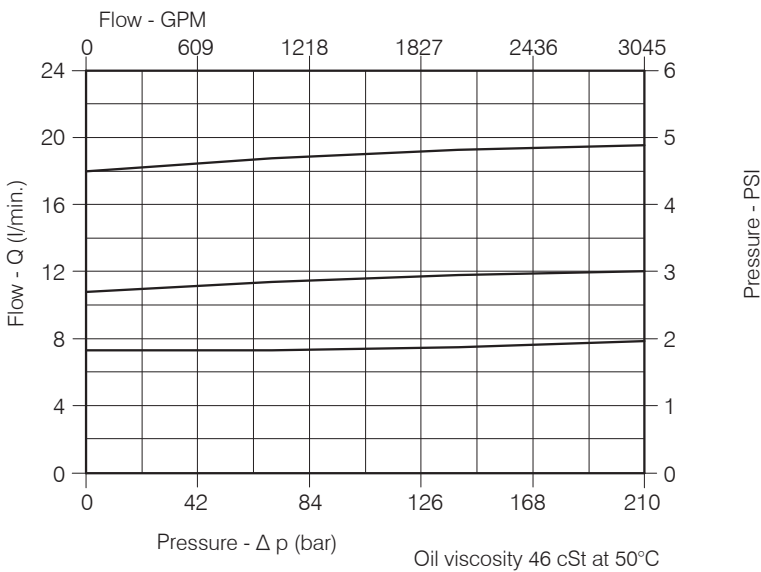
CARTRIDGE STYLE PRESSURE COMPENSATED FLOW CONTROL VALVE



Performance

Rated size	DN 6
Min/Max flow-rate	1/20 l/min - 0.26/5.3 GPM
Max working pressure	350 bar - 5075 PSI
Room temperature	-30°C + 50°C
Oil temperature	-30°C + 80°C
Recommended filtration	50 micron
Tightening torque	46 ÷ 54 Nm
Weight	0.201 Kg

Performance Details

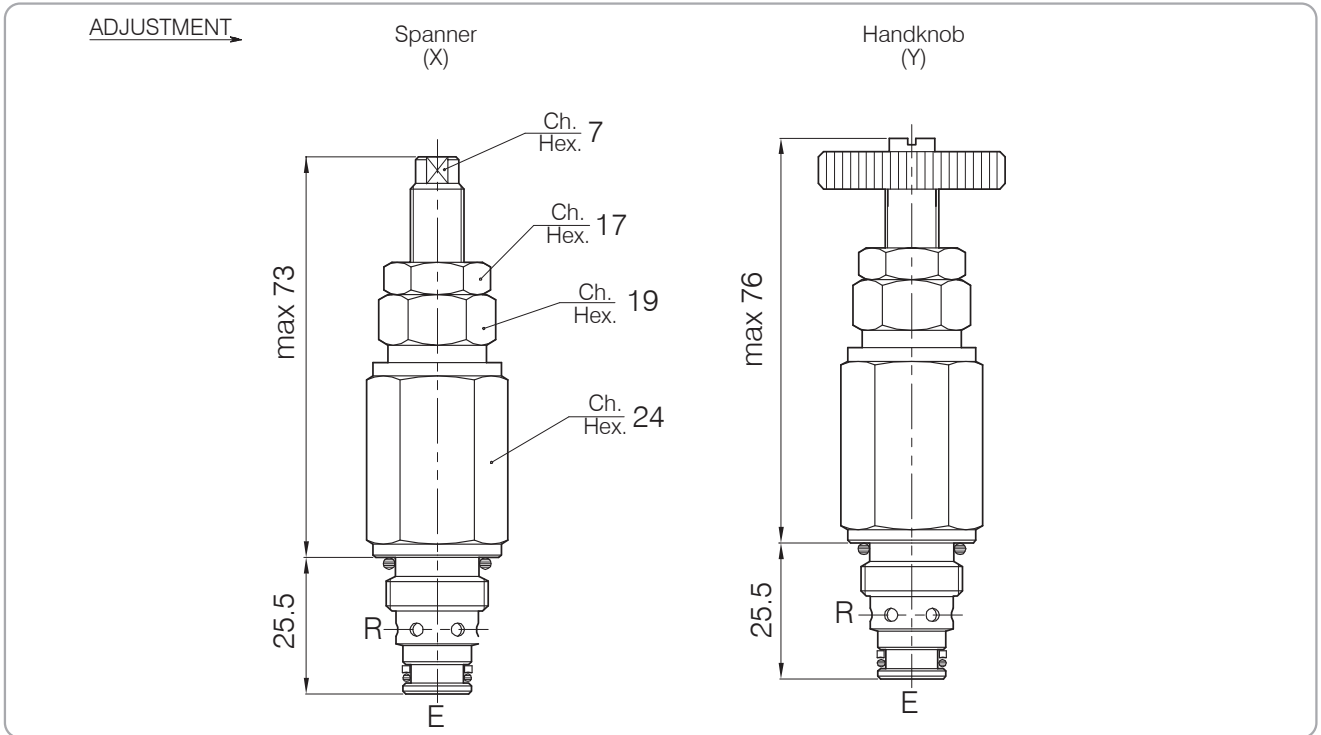


NOTE :

Compensated flow E to R
Reverse flow allowed but not compensated
(throttle operation)

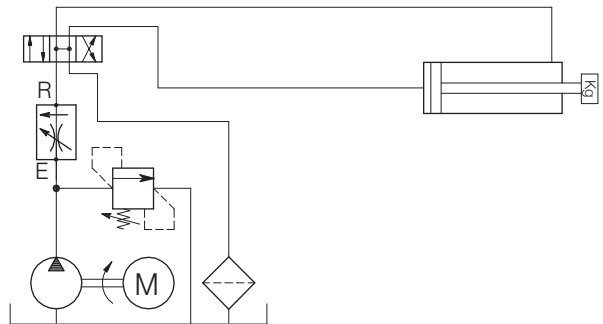
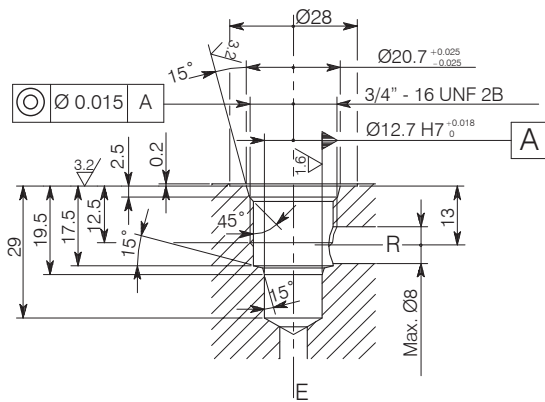
VSTC-20-...

Hydraulic valves and integrated components



Cavity CE.011.N

Typical Circuit Example



The valve seat should be perfectly tooled

Ordering Code

4 • 23 • 0 • X • 0

Cracking pressure

X : Spanner

Y : Handknob