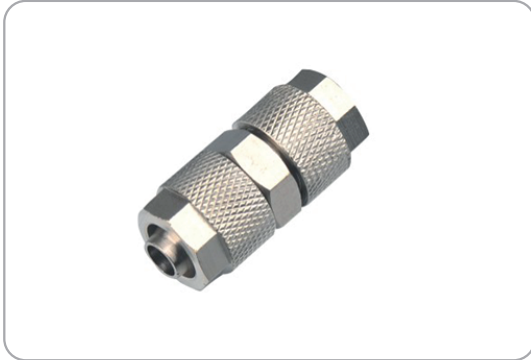


Push on Fittings

WBU SERIES



Ordering Code

W	BC	8	-	01	-	*	-	*
(1)	(2)	(3)	(4)	(5)	(6)			

- (1) FITTINGS
- (2) PUSH ON FITTINGS MODEL
BZL WON'T BE SWIEL ELBOW TYPE
- (3) TUBE OUTER DIA

Code	4	6	8	10	12
Tube Outer Diameter mm	φ4	φ6	φ8	φ10	φ12

(4) THREAD TYPE AND SIZE

55° Taper Pipe Thread

Code	01	02	03	04	06
Tube Outer Diameter mm	R1/8	R1/4	R3/8	R1/2	R3/4

55° G- Thread

Code	G01	G02	G03	G04	G06
Tube Outer Diameter mm	G1/8	G1/4	R3/8	G1/2	G3/4

METRIC SIZE

M5, M10X1

THE METHOD OF METRIC THREAD, EX: M5, M10X1

(5) THE SPECIFICATION OF PUSHING TUBE I.D. REFER TO THE PICTURE AT RIGHT

(6) ATTACHED THE THREAD OF PUSH ON FITTING

Product Specifications

Code	Blank	A	B
4	4x2.5		
6	6x4		
8	8x6	8X5	
10	10x8	10X6.5	
12	12x10	12X8	12X9

Dimension

MODEL	φD	L		
WBU04	4	22	8	
WBU06	6	26.5	10	8
WBU08	8	31	12	12
WBU10	10	36.5	14	13
WBU12	12	32.5	17	15

