

PROPORTIONAL ELECTRO-HYDRAULIC P-Q VALVE(WFBG)



Technical Specification

Model	WFBG-02-*-*	WFBG-03-*-*	WFBG-06-250-*	
Maximum pressure (Bar)	315			
Maximum Flow (L/min)	40	160	250	
Flow range (L/min)	1-40	2-160	3-250	
Pressure control	Rated current (mA)	800		
	Coil resistance (mA)	19.5	43.5	43.5
	P Different (Mpa)	0.6	0.6	0.7
	Hysteresis (mA)	<5	<7	<7
	Repeatability (W)	<1		
Flow control	Pressure range (Bar)	16:15-160	16:15-160	16:15-160
		25:15-250	25:15-250	25:15-250
		31.5:15-315	31.5:15-315	31.5:15-315
	Rated current (mA)	800		
	Coil resistance (Ω)	10	10	10
Hysteresis (%)	<3			
Repeatability (%)	<1			
Cleanliness	Filter is recommended for the highest fluid pollution degree;the lowest specific filtration resistance according to ISO 4406 (C) 20/18/15.			

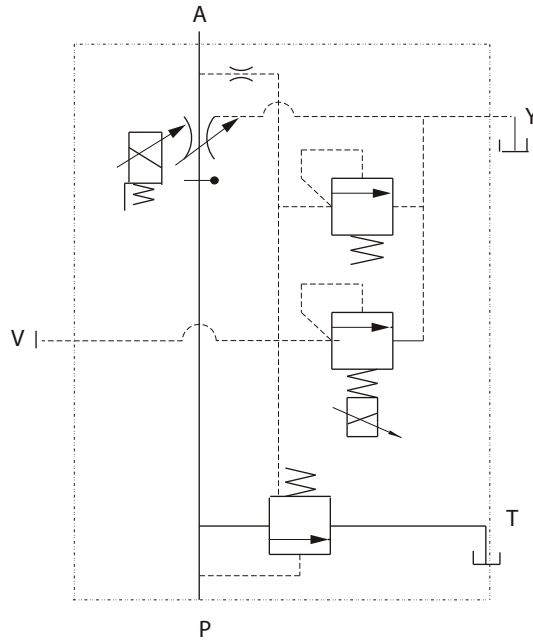
This proportional valve adopts two electrical loops to control pressure and flow of hydraulic system respectively. Using very small pressure drop to track load pressure and control the pump pressure, it is an energy-saving valve.

Model Instruction

WFBG --* *--*/90--*	
Proportional electro-hydraulic control P-Q valve	Remarks
	Design serial number
	Working pressure 160: 160Bar 250: 250 Bar 315 : 315 Bar
Z : Directly operated	
Specification 02 : DN 6 03 : DN 10 06 : DN 25	Flow range : 02 Specification 20 20 l/min 40 40l/min 03 Specification 125 125l/min 160 160l/min 06 Specification 250 250l/min

PROPORTIONA ELECTRO-HYDRAULIC CONTROL P-Q VALVE (WFBG)

Code Symbol

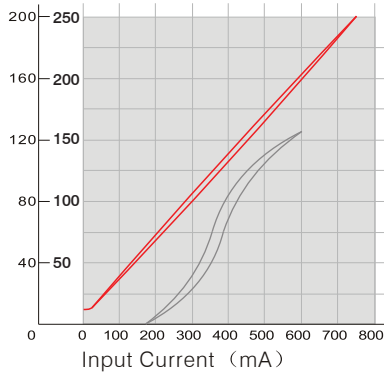


02,03,06 Characteristic Curves (Measured at $\nu=36 \times 10^{-6} \text{m}^2/\text{S}$ $t=50^\circ\text{C}$)

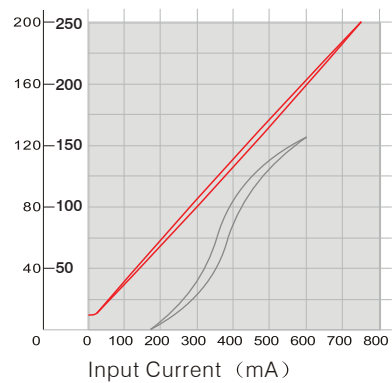
Output flow, output pressure/input current curves

Output flow (L/min) ———

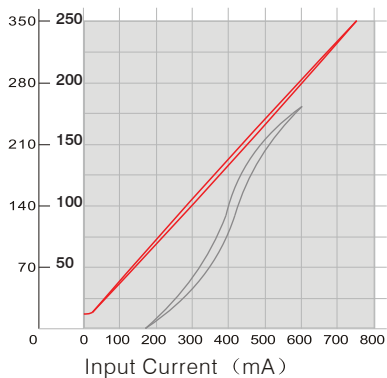
Output pressure (Bar) ———



WFBG-02/40-25



WFBG-03/160-25

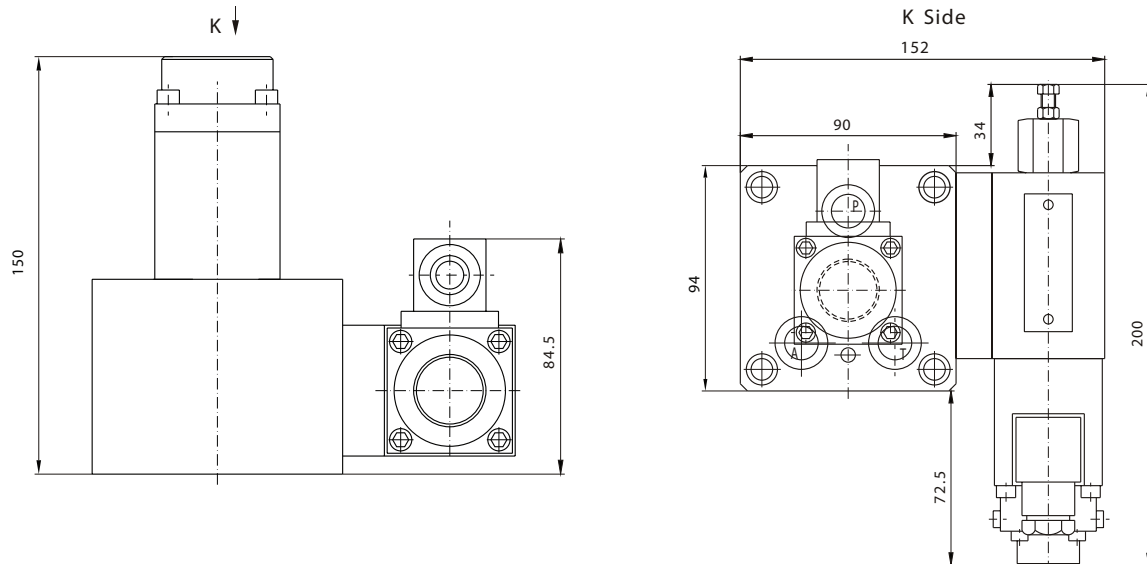


WFBG-06/250-25

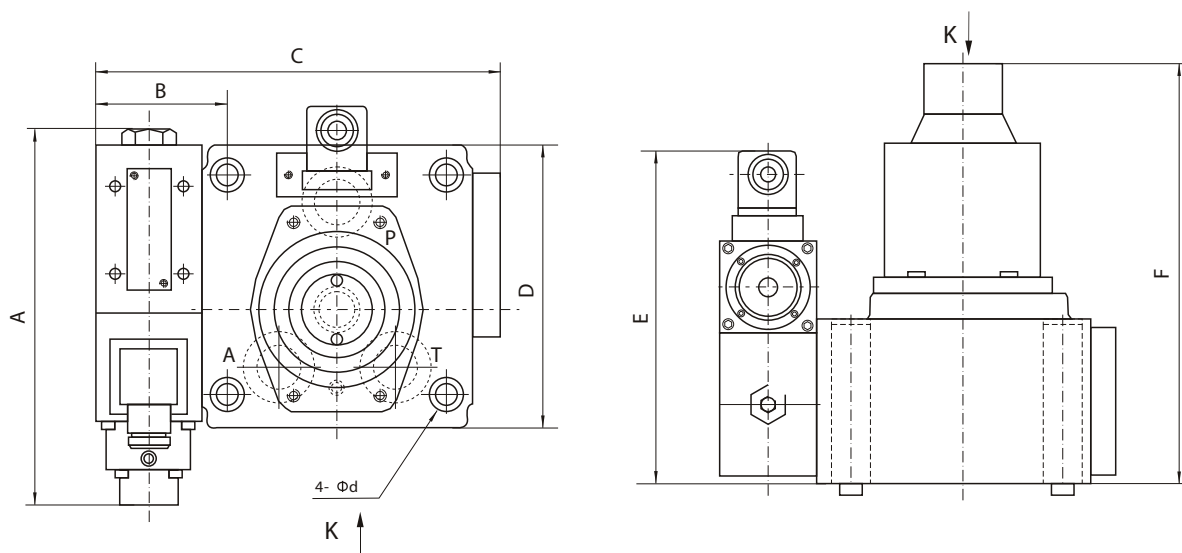
PROPORTIONAL ELECTRO-HYDRAULIC CONTROL P-Q VALVE (WFBG)

External Dimensions

WFBG-02



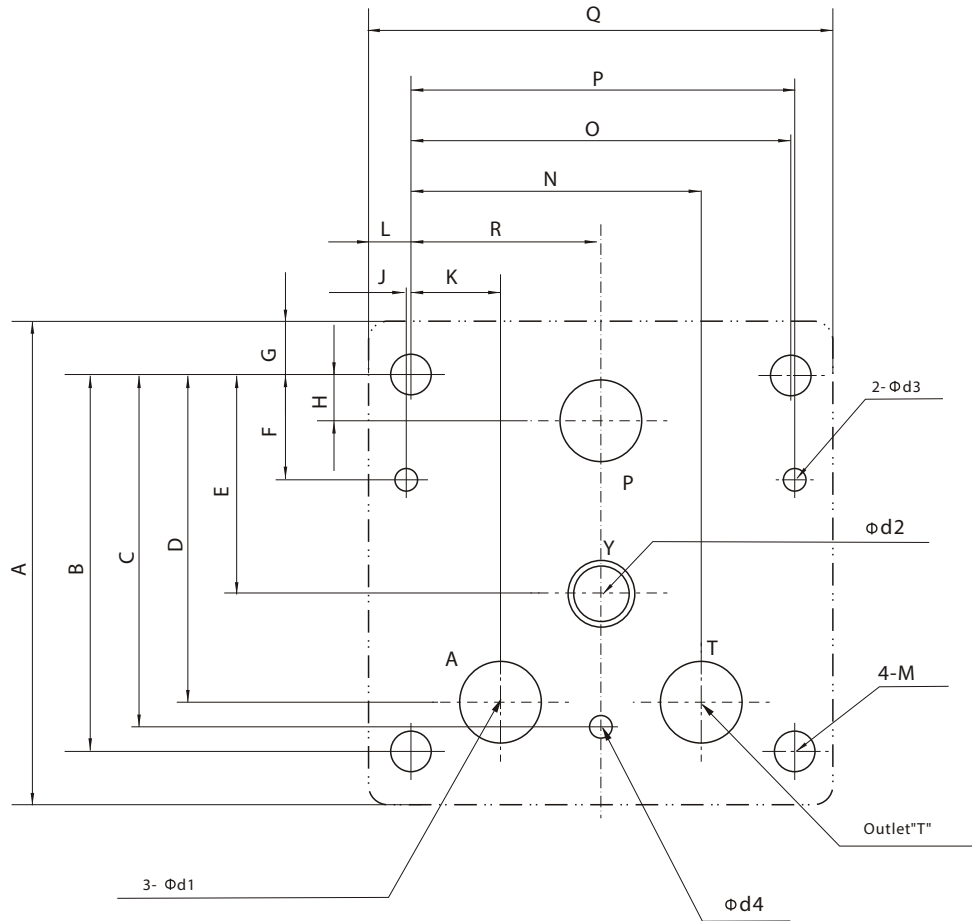
WFBG-03,06



Model	A	B	C	D	E	F	d
WFBG-03	171	61.7	188	130	171	216	11
WFBG-06	171	67	247	174	199.5	248	17.5

PROPORTIONAL ELECTRO-HYDRAULIC CONTROL P-Q VALVE (WFBG)

Plate Size



The surface, connecting with the valve, should be Ra0.8 roughness, and 0.01/100mm flatness.

Model	A	B	C	D	E	F	G	H	J	K	L	R	N	O	P	Q	M	d ₁	d ₂	d ₃	d ₄
WFBG-02	84	76	70	65	43	21.5	9	10	1	16.5	9	36	55.5	72	73	90	M8/14	14	10	7×7L	6
WFBG-03	130	101.6	95.3	88.9	59	28.6	14.2	12.7	0.8	23.8	11.7	50.8	77.8	101.6	102.4	124	M10/19	23	11	7×7L	6
WFBG-06	174	133.4	133.4	107	82.2	41.3	24	12.7	1.6	28.1	17	73.1	118.1	146.1	144.5	180	M16/30	29	14	17×10L	6.2

Note in use

- Discharge back press ≤ 2Bar
Return back press ≤ 5Bar
- Minimum stable flow under controlled pressure
Nominal size 03, 06 ≥ 10 l/min
Nominal size 10 ≥ 15 l/min
- Vent hole orientation can be adjusted freely: Put it upward to vent off the air from the piping.