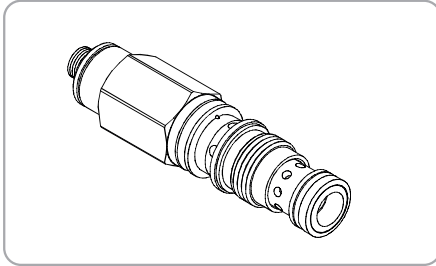


WINMAN WGB Series Cartridge Pressure Reducing Valves

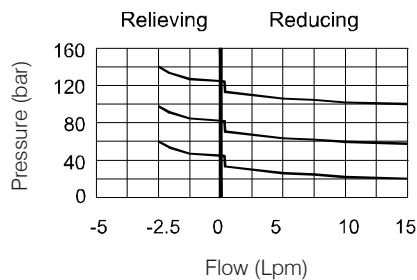
WGB-02 Series



Specifications

Model Number	Max. Pressure (bar)	Max. Flow (lpm)	Weight (Kg)
WGB-02	350 (5076psi)	30 (17.93 gpm)	0.22 (0.22 lbs)
Fluid Type		ISO VG 32, 46, 68	
Viscosity		10~400 (59~1854 SSU)	
Operating Temperature		-15~70 (-5~158°F)	
Contamination Level		ISO4406.21/19/16 NAS1638,10	

Performance



How to order

1	2	3	4	5
WGB	02	- 21	- *	- 20

1 Valve Series
WGB=Cartridge Type Direct Acting Balance Valves (REDUCING/RELIEVING VALVES)

2 Subplate Mounting Size
02 :T-11A Cavity :CST-11A

3 Adjustment Pressure

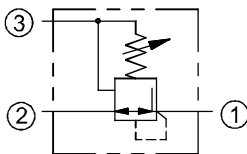
Order	Adjustment pressure
02	1.5 ~ 25 (bar)
05	1.5 ~ 55 (bar)
10	3.5 ~ 105 (bar)
21	35 ~ 210 (bar)
30	50 ~ 315 (bar)

4 Adjustment Option

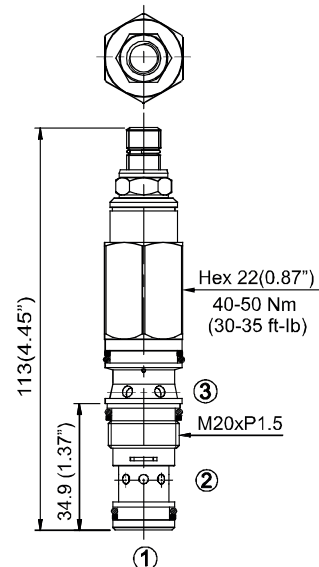
NONE	NONE:TOOL ADJUST	
K	K:HAND-BAR ADJUST	

5 Design No

Control Ports (S)

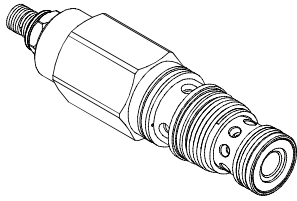


Dimensions



WINMAN WGB Series Cartridge Pressure Reducing Valves

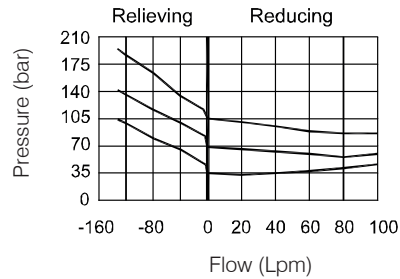
WGB-02 Series



Specifications

Model Number	Max. Pressure (bar)	Max. Flow (lpm)	Weight (Kg)
WGB-03	350 (5076psi)	80(21.13 gpm)	0.38 (0.84 lbs)
Fluid Type		ISO VG 32, 46, 68	
Viscosity cSt		10~400 (59~1854 SSU)	
Operating Temperature		-15~70 (-5~158°F)	
Contamination Level		ISO4406.21/19/16 NAS1638,10	

Performance



How to order

1	2	3	4	5
WGB	03	- 21	- * -	20

1 Valve Series
WGB=Cartridge Type Direct Acting Balance Valves (REDUCING/RELIEVING VALVES)

2 Subplate Mounting Size
03 :T-2A Cavity :CST-2A

3 Adjustment Pressure

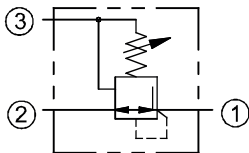
Order	Adjustment pressure
05	1.5 ~ 55 (bar)
10	3.5 ~ 105 (bar)
21	35 ~ 210 (bar)
30	50 ~ 315 (bar)

4 Adjustment Option

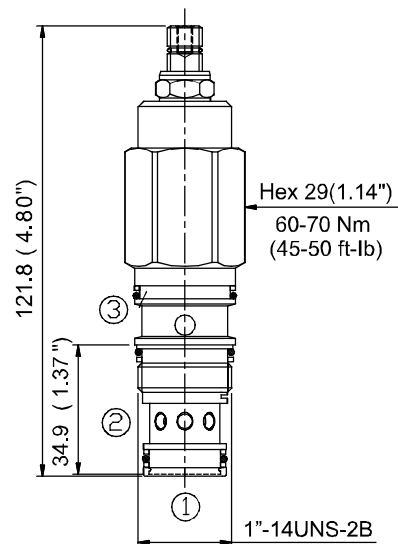
NONE	NONE:TOOL ADJUST	
K	K:HAND-BAR ADJUST	

5 Design No

Control Ports (S)

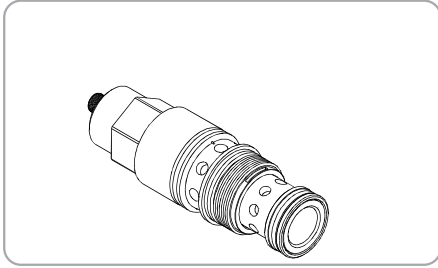


Dimensions



WINMAN WGB Series Cartridge Pressure Reducing Valves

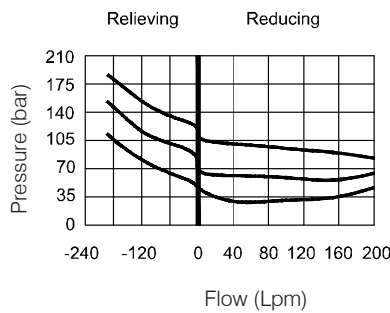
WGB-06 Series



Specifications

Model Number	Max. Pressure (bar)	Max. Flow (lpm)	Weight (Kg)
WGB-06	350 (5076psi)	160 (42.27 gpm)	0.8 (1.76 lbs)
Fluid Type		ISO VG 32, 46, 68	
Viscosity cSt		10~400 (59~1854 SSU)	
Operating Temperature		-15~70 (-5~158°F)	
Contamination Level		ISO4406.21/19/16 NAS1638,10	

Performance



How to order

1	2	3	4	5
WGB	06	- 21	- *	- 20

- 1 Valve Series**
WGB=Cartridge Type Directional Balance Valves
(REDUCING/RELIEVING VALVES)

- 2 Subplate Mounting Size**
06 :T-17A Cavity :CST-17A

- 3 Adjustment Pressure**

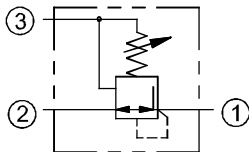
Order	Adjustment pressure
05	1.5 ~ 55 (bar)
10	3.5 ~ 105 (bar)
21	35 ~ 210 (bar)
30	50 ~ 315 (bar)

- 4 Adjustment Option**

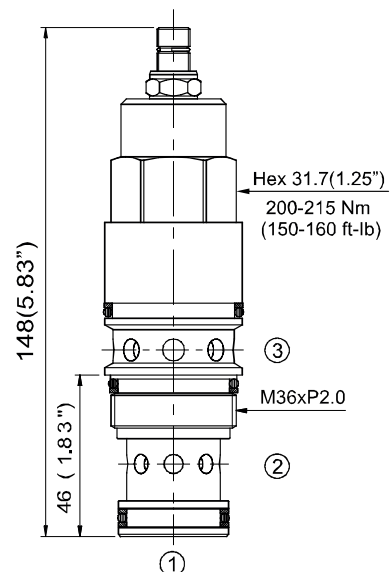
NONE	NONE:TOOL ADJUST	
K	K:HAND-BAR ADJUST	

- 5 Design No**

Control Ports (S)

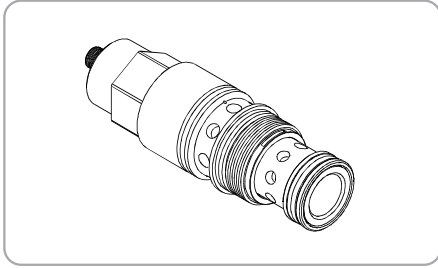


Dimensions



WINMAN WGB Series Cartridge Pressure Reducing Valves

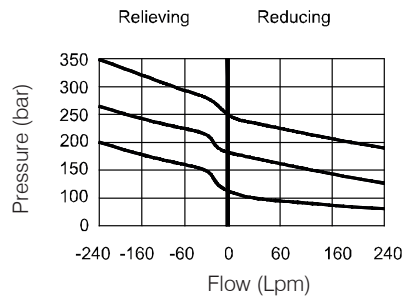
WGB-10 Series



Specifications

Model Number	Max. Pressure (bar)	Max. Flow (lpm)	Weight (Kg)
WGB-10	350 (5076psi)	320 (84.83 gpm)	1.7 (3.75 lbs)
Fluid Type		ISO VG 32, 46, 68	
Viscosity		10~400 (59~1854 SSU)	
Operating Temperature		-15~70 (-5~158°F)	
Contamination Level		ISO4406.21/19/16 NAS1638,10	

Performance



How to order

1	2	3	4	5
WGB	10	21	*	20

- 1 Valve Series**
WGB=Cartridge Direct Acting Balance Valve
REDUCING/RELIEVING VALVES

- 2 Subplate Mounting Size**
10 :T-19A Cavity :CST-19A

- 3 Adjustment Pressure**

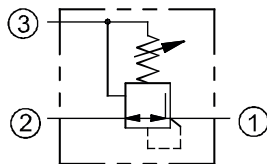
Order	Adjustment pressure
05	1.5 ~ 55 (bar)
10	3.5 ~ 105 (bar)
21	35 ~ 210 (bar)
30	50 ~ 315 (bar)

- 4 Adjustment Option**

NONE	NONE:TOOL ADJUST	
K	K:HAND-BAR ADJUST	

- 5 Design No**

Control Ports (S)



Dimensions

