

## MODULAR RELIEF VALVE-70 SERIES



### Technical Specification

Specification	02	03
Maximum working pressure (Bar)	315	
Max. Flow (L/min)	35	70
Working fluid	Mineral oil; phosphate-ester	
Fluid temp. (°C)	-20~70	
Viscosity (mm <sup>2</sup> /s)	12~380	
Working press (Bar)	70	140 210 315
Cleanliness	The maximum allowable cleanliness of the oil should be according to 9th degree of Standard NAS 1638. It is suggested that the minimum filter rating should be $\beta_{10} \geq 75$ .	

### Model Description

**W M R - \* \* - \* - \* / \* 7 0 \***

Modular relief valve

Specification  
02 : DN 06  
03 : DN 10

P : P Pipeline relief  
A : A Pipeline relief  
B : B Pipeline relief  
W : AB Pipeline relief

Working pressure  
50 : to 50bar  
100 : to 100 bar  
200 : to 200 bar  
315 : to 315 bar

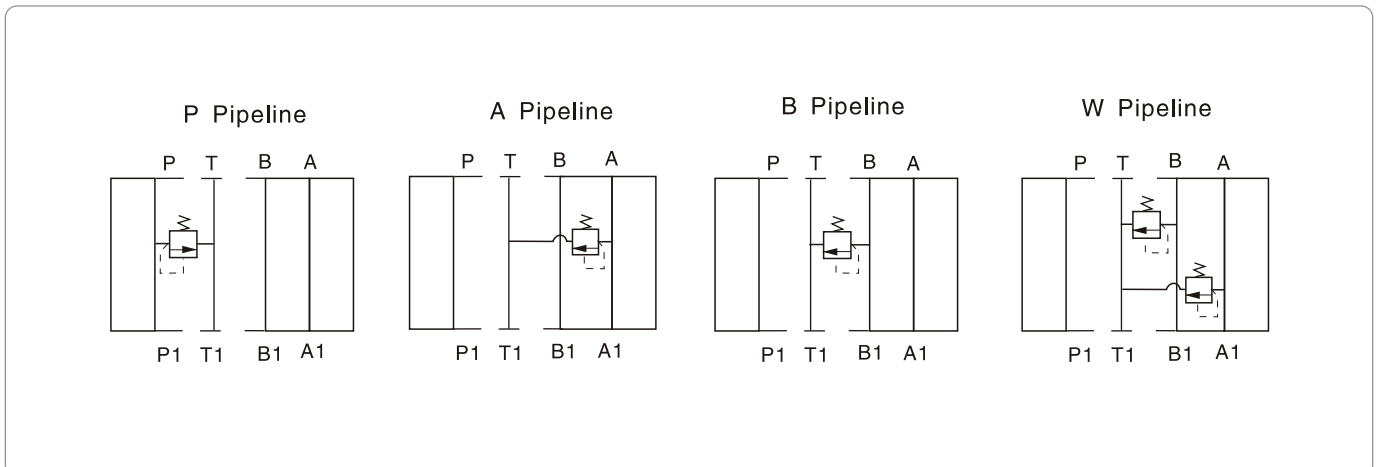
Remarks

Serial number

Seal material  
Omit : NBR Seals  
V : FPM Seals

8 Handle

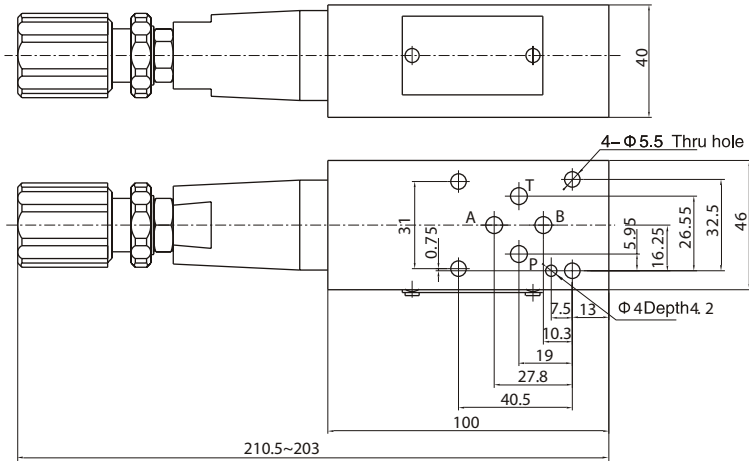
### Code Symbol



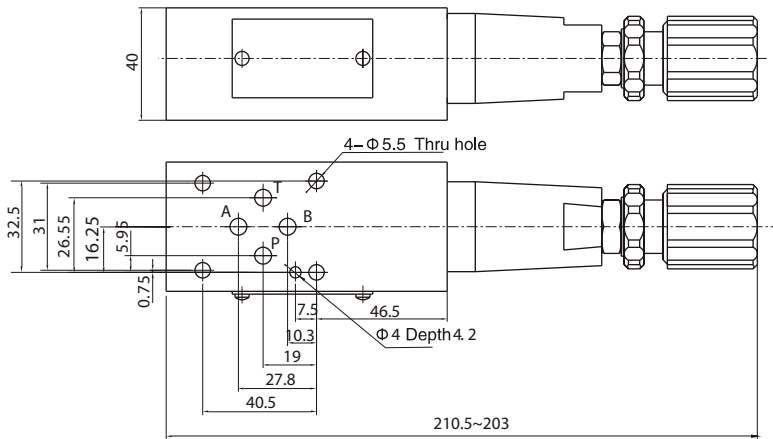
**MODULAR RELIEF VALVE-70 SERIES**

**02 External Dimensions**

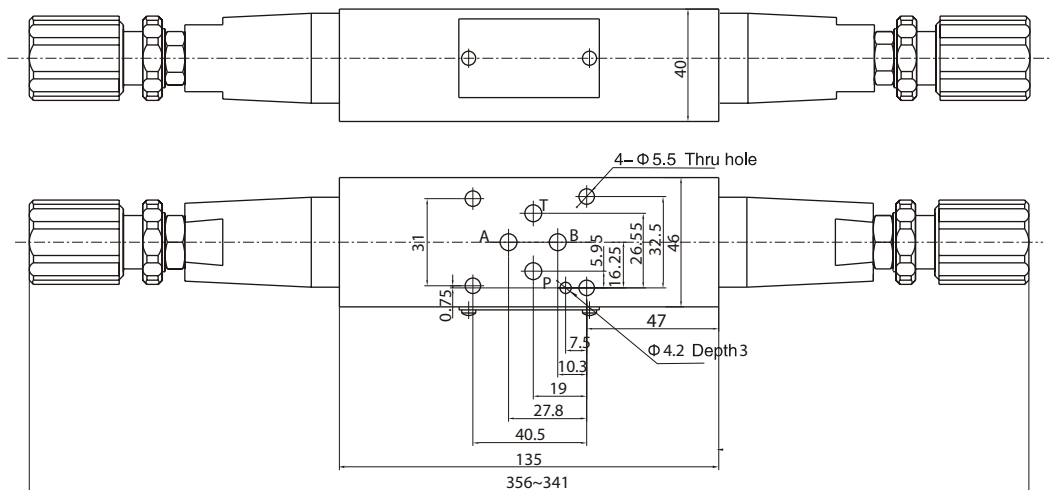
**WMR-02-A**



**WMR-02-B,P**



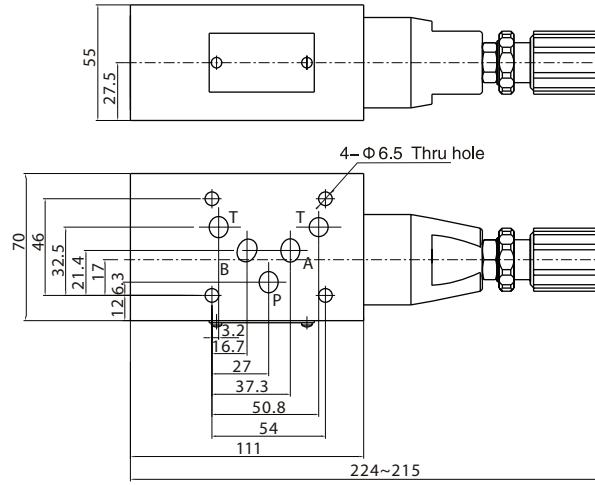
**WMR-02-W**



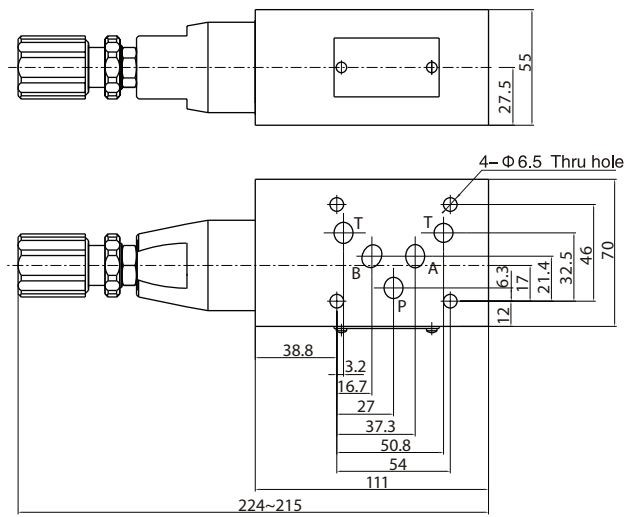
**MODULAR RELIEF VALVE-70 SERIES**

**03 External Dimensions**

**WMR-03-A...**



**WMR-03-B,P...**



**WMR-03-W...**

