

## WINMAN SOLENOID VALVES

### WVB0.S08.A Valve Series



**SAE Cartridge - 250 bar**  
**Directional Valve - 4/3 Spool Type**

#### Description

A solenoid - operated, 4-way 3 positions, spool-type, direct-acting, screw-in hydraulic directional cartridge valve.

In the de-energized mode the SVB0.S08 blocks flow to all ports.

When coil S1 (lower coil) is energized flow is allowed from 3 to 4 and from 2 to 1.

When coil S2 (upper coil) is energized flow is allowed from 3 to 2 and from 4 to 1.

The rigid design using a 1-piece body contributes to minimize the effect of eccentricities in cavity and provides great reliability.

Low pressure drop thanks to optimized paths.

#### Technical Features

All external surfaces are zinc plated and corrosion-proof.

All valve parts are made of high strength steel. Spool and cage are hardened and super-finished to ensure minimal wear and to extend service life.

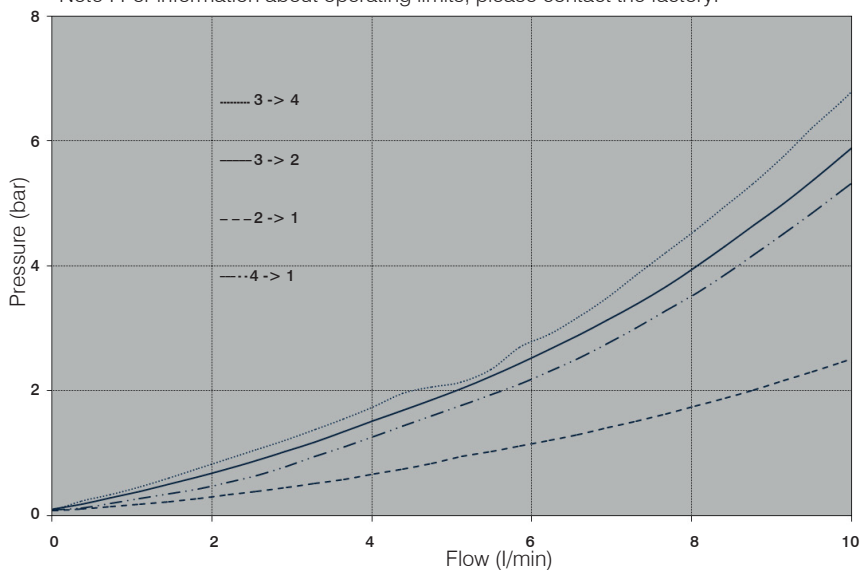
Coil seals protect the solenoid system.

Industry SAE common cavity.

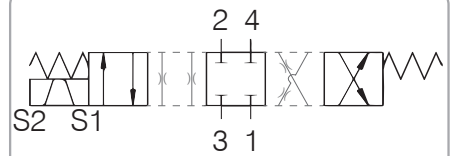
Note : Standard sealing NBR (BUNA-N)

#### Performance Details

Note : For information about operating limits, please contact the factory.



#### Symbol



#### Technical Data

Maximum operating pressure: 250 bar

Maximum flow: 10 l/min

Internal leakage: max 120 cm<sup>3</sup>/min @ 250 bar

Temperature: -30°C to 110°C

Fluids: Mineral-based or synthetics with lubricating properties at viscosities of 7.4 to 420 cSt

Minimum pull-in voltage: 85% of nominal

Orientation: no restrictions

Installation torque: 40-45 Nm

Seal kit sono: SK.065 e SK.027(for coil)

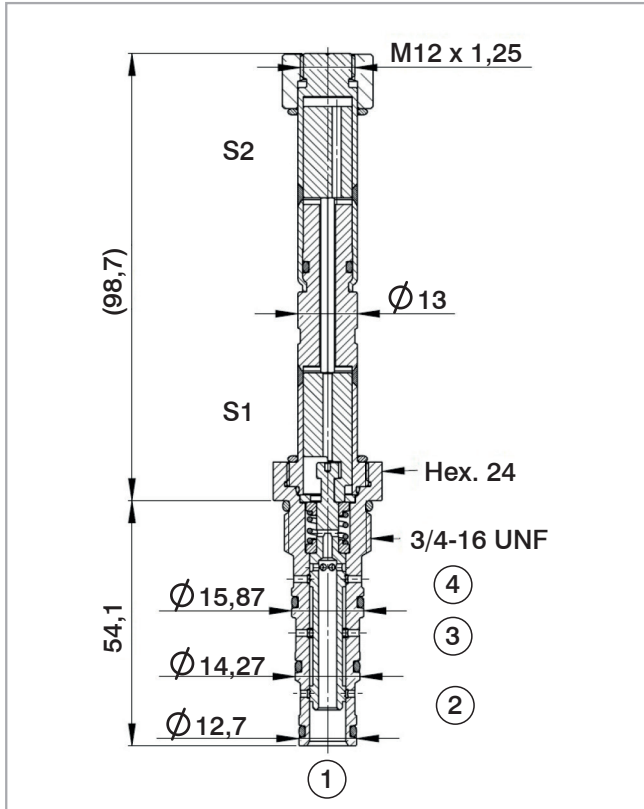
Weight: 0.183 kg

NOTE: The performance chart illustrates flow handling capacity 3 to 4 and 2 to 1 (energized S1) and 3 to 2 and 4 to 1 (energized S2)

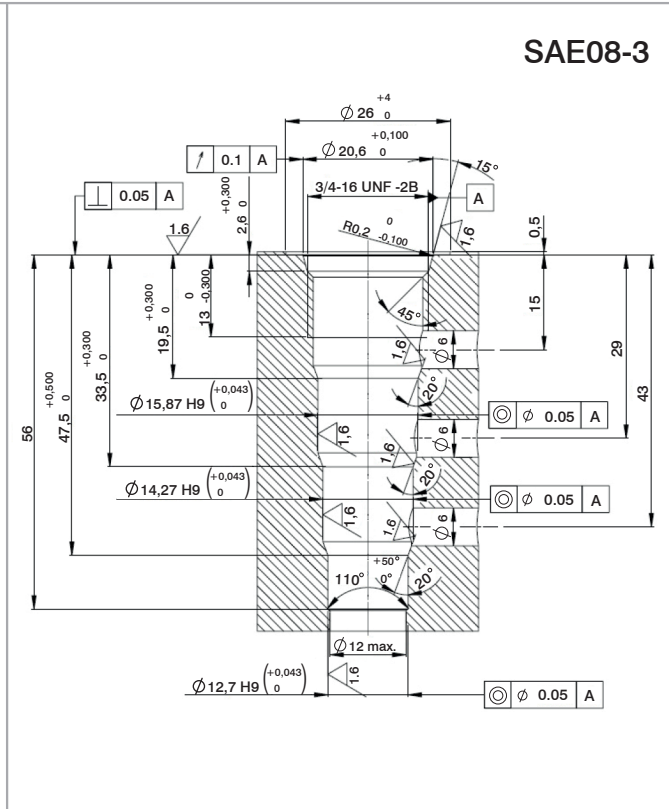
P/Q curves are recorded at TOil = 40°C and 46 cSt

**WINMAN SOLENOID VALVES**

**Cross Section**



**Cavity Details**



**Ordering Code**

W V B 0 • S 0 8 • 0 0 • A \* \*

Valve basic code

Cavity

S08= 3/4 - 16 UNF with Ø15,87, Ø14,27 and Ø12,7 nose sizes

Flow path

All ports blocked (de-energized)  
3 to 4 and 2 to 1 (energized) S1  
3 to 2 and 4 to 1 (energized) S2

Manual override

0 = No override

Marking

0=Standard factory marking  
Customized markings can be done upon request

**Coil**



Use 18W coil to operate this valve.