

WINMAN SOLENOID VALVES

WVB0.S08.B Valve Series



SAE Cartridge - 250 bar
Directional Valve - 4/3 Spool Type

Description

A solenoid - operated, 4-way 3 positions, spool-type, direct-acting, screw-in hydraulic directional cartridge valve.

In the de-energized mode the SVB0.S08 blocks flow 2 and 4 while flow is allowed from 3 to 1 ports.

When coil S1 (lower coil) is energized flow is allowed from 3 to 4 and from 2 to 1.

When coil S2 (upper coil) is energized flow is allowed from 3 to 2 and from 4 to 1.

The rigid design using a 1-piece body contributes to minimize the effect of eccentricities in cavity and provides great reliability.

Low pressure drop thanks to optimized paths.

Technical Features

All external surfaces are zinc plated and corrosion-proof.

All valve parts are made of high strength steel. Spool and cage are hardened and super-finished to ensure minimal wear and to extend service life.

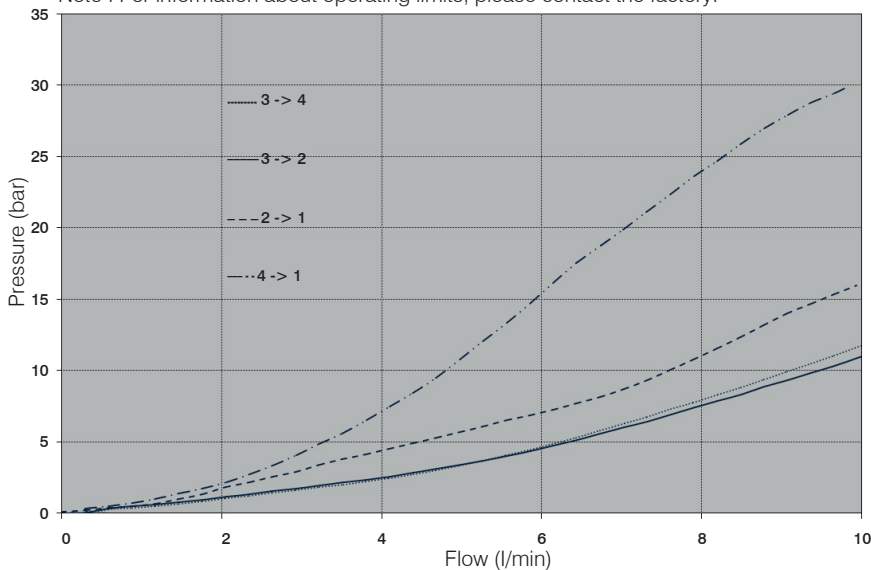
Coil seals protect the solenoid system.

Industry SAE common cavity.

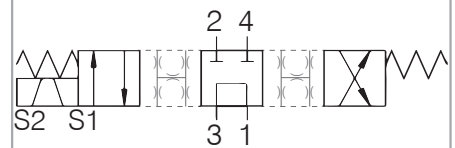
Note : Standard sealing NBR (BUNA-N)

Performance Details

Note : For information about operating limits, please contact the factory.



Symbol



Technical Data

Maximum operating pressure: 250 bar

Maximum flow: 10 l/min

Internal leakage: max 120 cm³/min @ 250 bar

Temperature: -30°C to 110°C

Fluids: Mineral-based or synthetics with lubricating properties at viscosities of 7.4 to 420 cSt

Minimum pull-in voltage: 85% of nominal

Orientation: no restrictions

Installation torque: 40-45 Nm

Seal kit sono: SK.065 e SK.027 (for coil)

Weight: 0.183 kg

NOTE: The performance chart illustrates flow handling capacity 3 to 4 and 2 to 1 (energized S1) and 3 to 2 and 4 to 1 (energized S2)

P/Q curves are recorded at TOil = 40°C and 46 cSt

