

WINMAN SOLENOID VALVES

WVT0.S10 Valve Series



SAE Cartridge - 350 bar
NC Single Lock Pilot Operated - Poppet Type

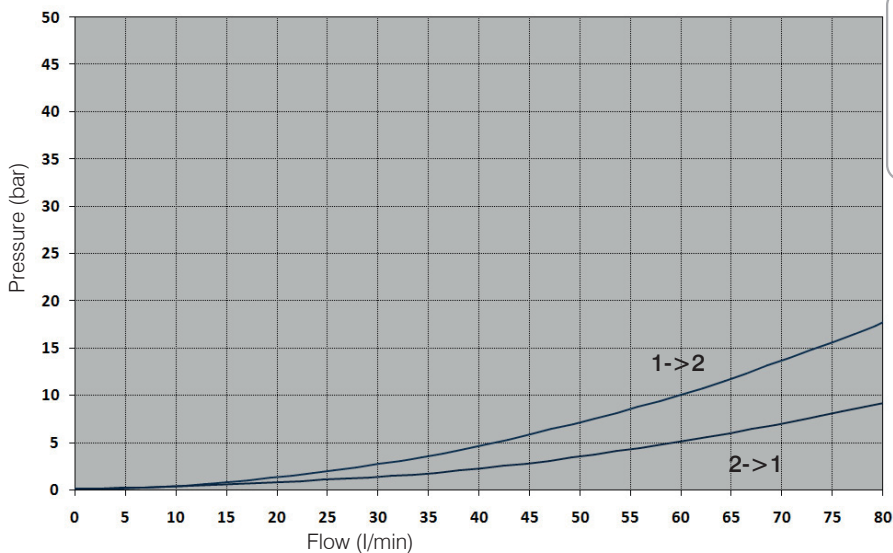
Description

Solenoid operated, 2-way 2-positions, normally closed, piloted poppet type, screw-in cartridge valve. Typically used as a blocking or load holding device for high pressure circuits. When the coil is de-energized, the SVT0.S10 acts as check valve allowing free flow from 1 to 2, while blocking from 2 to 1. When the coil is energized the poppet lifts and opens both the 2 to 1 and the 1 to 2 flow paths. The rigid design using a 1-piece body contributes to minimize the effect of eccentricities in cavity and provides great reliability. Low pressure drop thanks to optimized flow path.

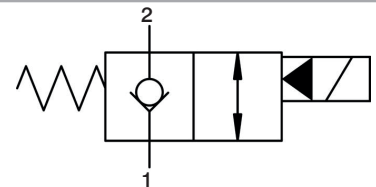
Technical Features

All external surfaces are zinc plated and corrosion-proof.
All valve parts are made of high strength steel. Poppet is hardened and ground to ensure minimal wear and extended service life.
Coil seals protect the solenoid system.
Manual override options.
Industry SAE common cavity.

Performance Details



Symbols

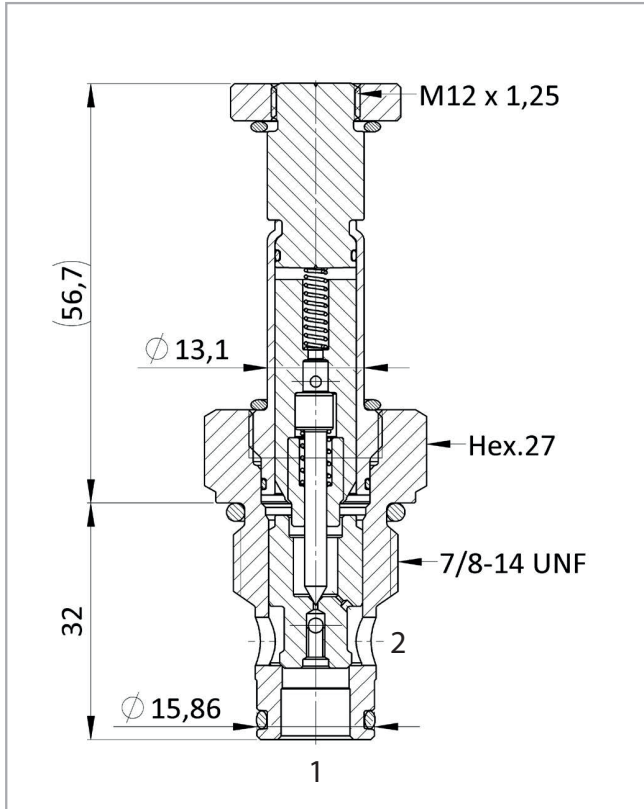


Technical Data

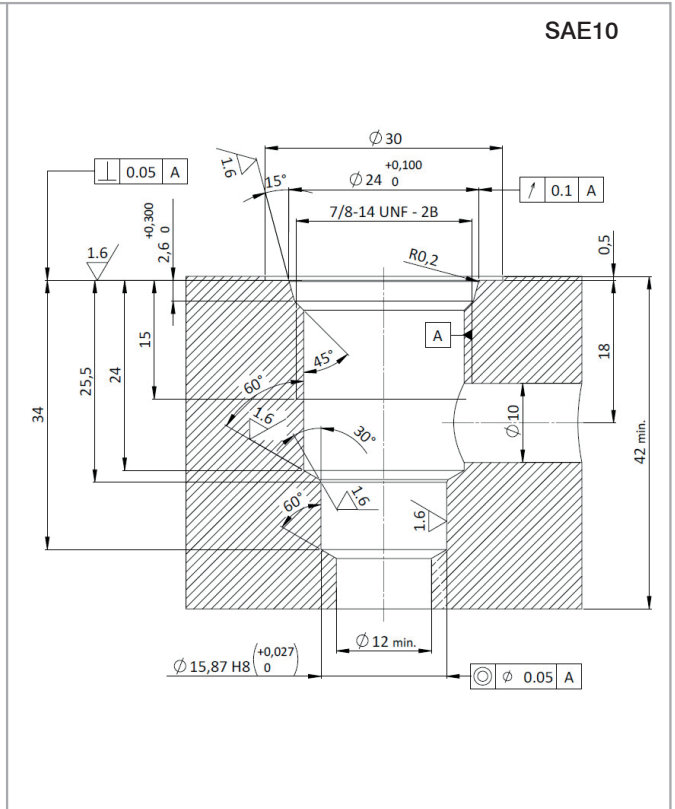
Maximum operating pressure: 350 bar
Maximum flow: 80 l/min
Internal leakage: max 5 drops/min @ 350 bar
Response time: Energized 30 ms,
De-energized 50 ms (typical 24V DC coil)
Temperature: -30°C to 110°C
Fluids: Mineral-based or synthetics with lubricating properties at viscosities of 7.4 to 420 cSt
Minimum pull-in voltage: 85% of nominal
Orientation: no restrictions
Installation torque: 55-65 Nm
Seal kit code: SK.032 and SK.027 (coil)
Weight: 0.139 kg
NOTE: The performance chart illustrates flow handling capacity in both directions (1 to 2 and 2 to 1, both energized).
P/Q curves are recorded at TOil = 40°C and 46 cSt

WINMAN SOLENOID VALVES

Cross Section



Cavity Details



Ordering Code

W V T 0 • S 1 0 • 0 * • 0 0 0

Valve basic code

Cavity

S10 = 7/8-14 UNF with Ø15,86 nose size

Manual override

Marking

0=Standard factory marking
Customized markings can be done upon request

Manual Override

Model Code	Type of override
0	No override
1	Screw
2	Pull & Twist
6	Pull & Hold

Coil



Use 18W coil to operate this valve.