

WINMAN SOLENOID VALVES

WVI0.S10 Valve Series



SAE Cartridge - 250 bar
Directional Valve - 3/2 Seated type

Description

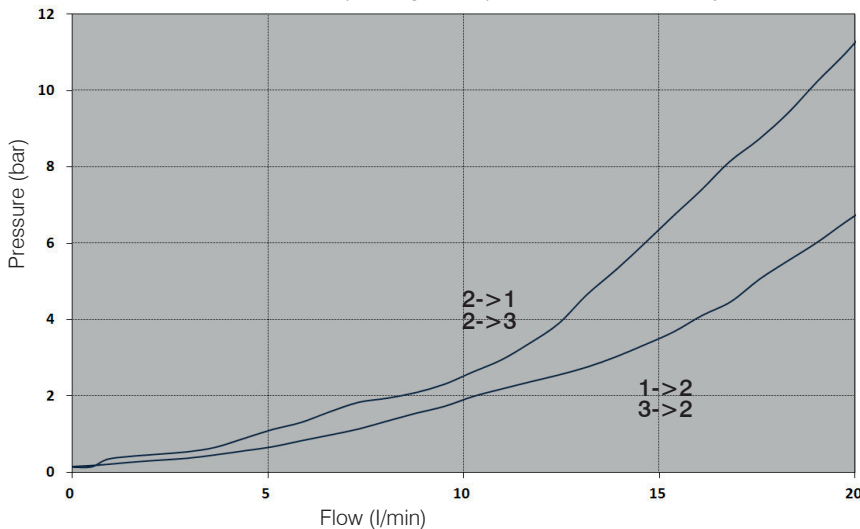
A Solenoid operated, 3 way 2 positions, seated type, direct acting, bi-directional blocking, screw-in hydraulic directional cartridge valve. In the de-energized mode, the SVI0.S10 allows flow bi-directionally between ports 1 and 2, while blocking flow at 3. In the energized mode, bi-directional flow is allowed between ports 3 and 2, while flow is blocked at 1 with extremely low leakage. Even if port 1 and 3 maybe fully pressurized they are not intended to be used as the inlet. The rigid design using a 1-piece body contributes to minimize the effect of eccentricities in cavity and provides great reliability. Low pressure drop thanks to optimized flow path.

Technical Features

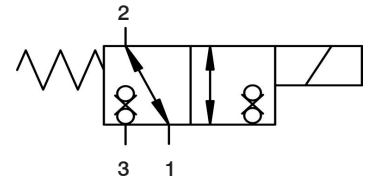
All external surfaces are zinc plated and corrosion-proof.
All valve parts are made of high strength steel.
Poppet is hardened and micron finished to ensure minimal wear and extended service life.
Coil seals protect the solenoid system.
Manual override option.
Industry SAE common cavity.
Note: Standard sealing NBR (BUNA-N)

Performance Details

Note : For information about operating limits, please contact the factory.



Symbols

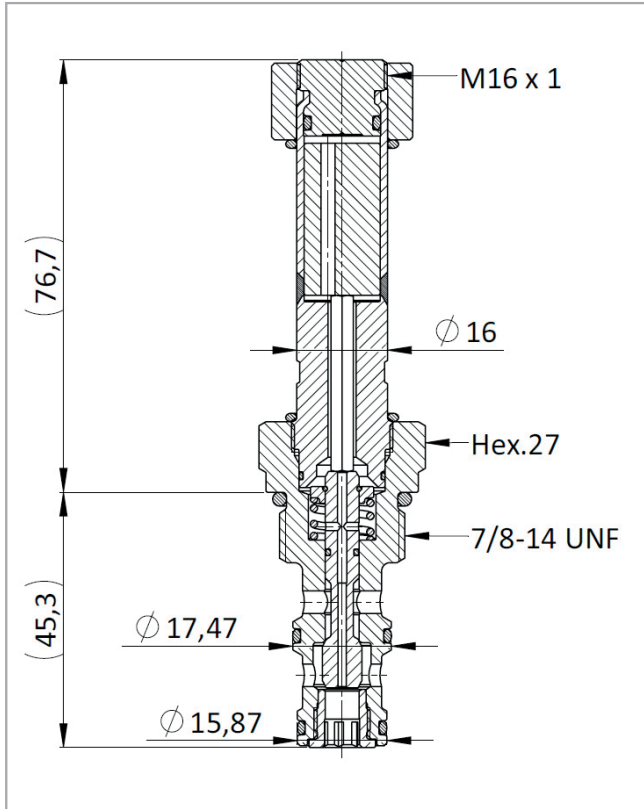


Technical Data

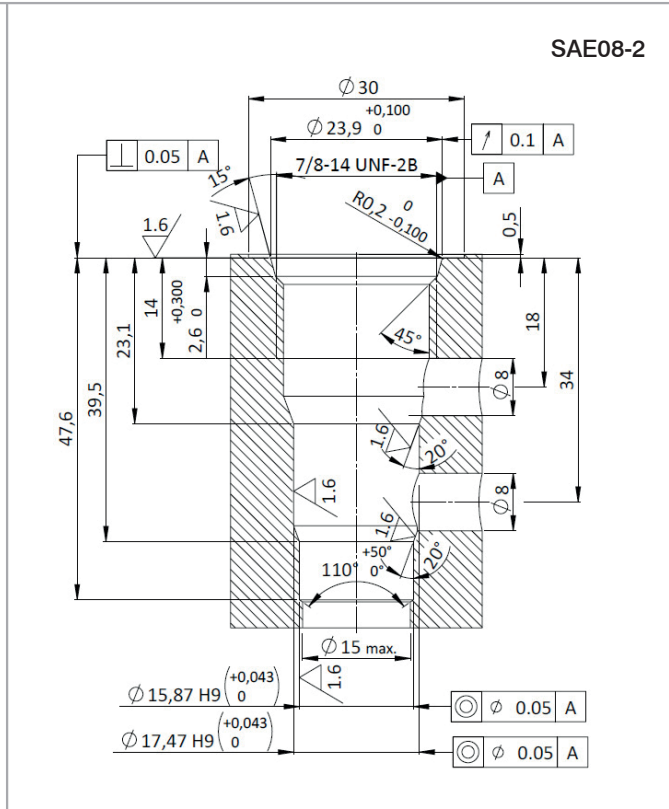
Maximum operating pressure: 250 bar
Maximum flow: 20 l/min
Leakage: max 5 drops/min @ 250 bar
Temperature: -30°C to 110°C
Fluids: Mineral-based or synthetics with lubricating properties at viscosities of 7.4 to 420 cSt
Minimum pull-in voltage: 85% of nominal
Orientation: no restrictions
Installation torque: 35-40 Nm
Seal kit code: SK.076 and SK.070 (coil)
Weight: 0.231 kg
NOTE: The performance chart illustrates flow handling capacity 2 to 3 (energized) and 2 to 1 (de-energized). P/Q curves are recorded at TOil = 40°C and 46 cSt

WINMAN SOLENOID VALVES

Cross Section



Cavity Details



Ordering Code

W V I O • S 1 0 • 0 * • 0 0 0

Valve basic code

Cavity
S10 = 7/8-14 UNF with Ø17,47 and Ø15,87 nose sizes

Filtration

Manual override

Marking

0=Standard factory marking
Customized markings can be done upon request

Manual Override

Model Code	Type of override
0	No override
1	Push pin
2	Push knob
6	Screw

Coil



Use 26W coil to operate this valve.