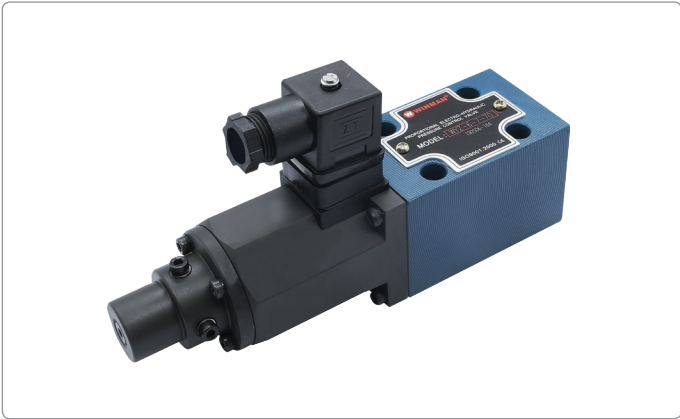


PROPORTIONAL DIRECTLY OPERATED RELIEF VALVES (WYZ)



Technical Specification		
Maximum Pressure	(Bar)	315
Maximum Flow	(L / min)	2
Minimum Flow	(L / min)	0.7
Rated current	(mA)	800
Coil resistance	(W)	10~19.5
Hysteresis	(%)	< ±1.5
Repeatability	(%)	±1
Cleanliness		Filter is recommended for the highest fluid pollution degree; the lowest specific filtration resistance according to ISO 4406 (C) 20/18/15.

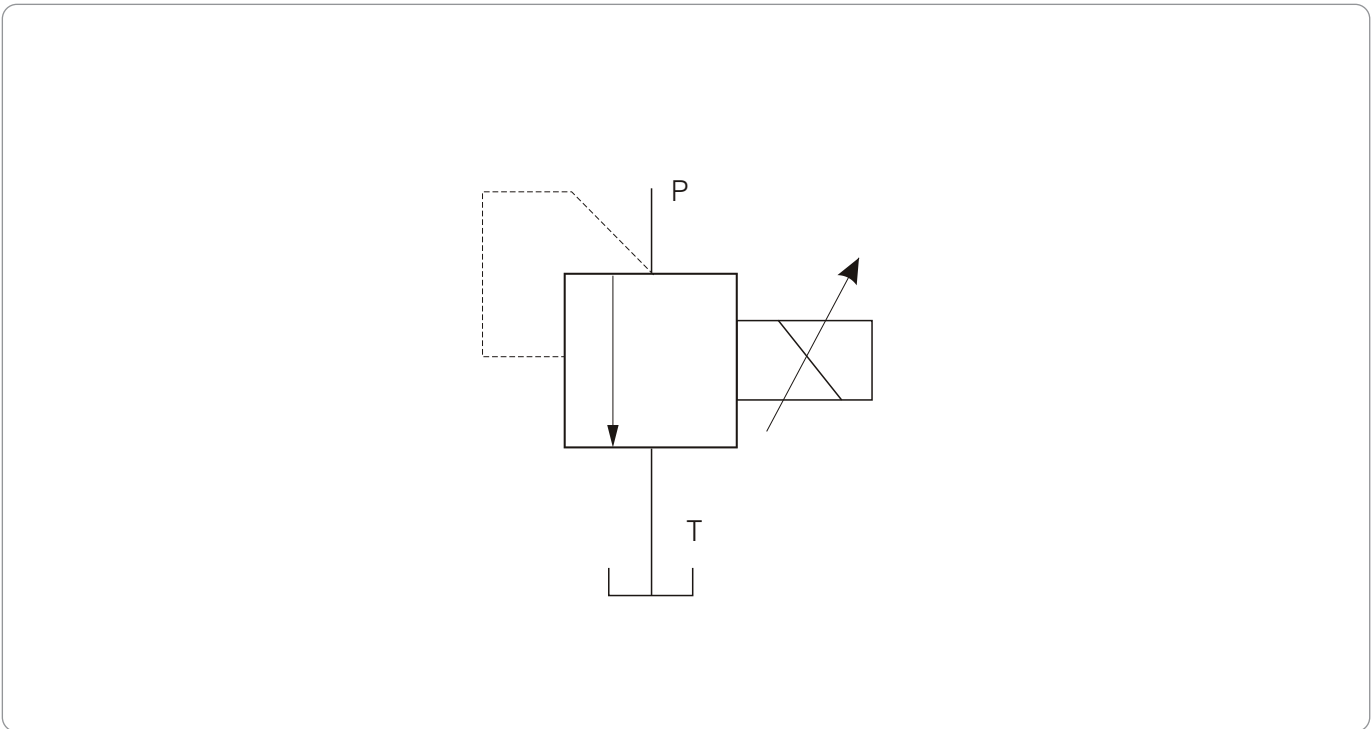
The valve is a direct operated valve controlled by proportional solenoid, it is mainly used for small hydraulic system according to input current, and always is used to be taken as the pilot relief valve of a second pressure valve.

Model Instruction

WYZ-02 - * - 70 *

<p>Proportional directly operated relief valve</p> <hr/> <p>Specification 02 :DN 6</p>	<p style="text-align: right;">Remarks</p> <hr/> <p style="text-align: center;">Design serial number</p> <hr/> <p style="text-align: center;">Working pressure</p> <p style="text-align: center;">70 : 70 Bar 160 : 160 Bar 250 : 250 Bar 315 : 315 Bar</p>
--	--

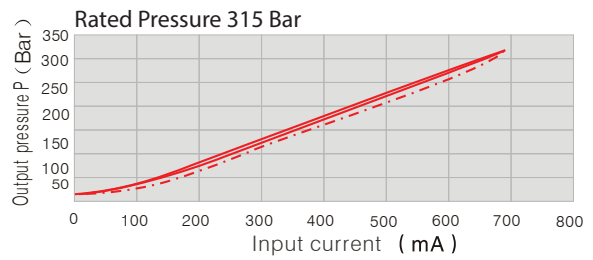
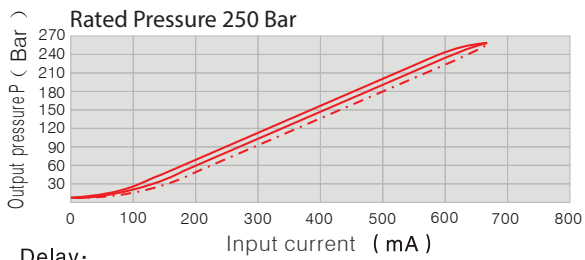
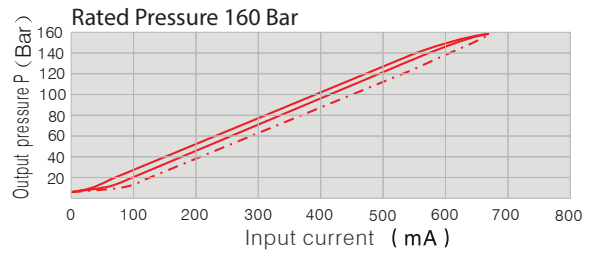
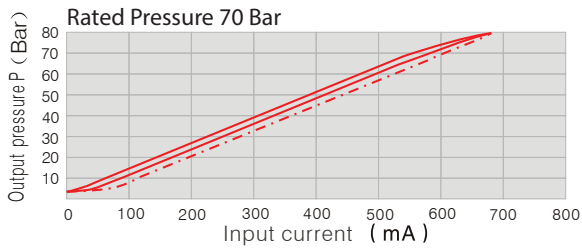
Code Symbol



PROPORTIONAL DIRECTLY OPERATED RELIEF VALVE (WYZ)

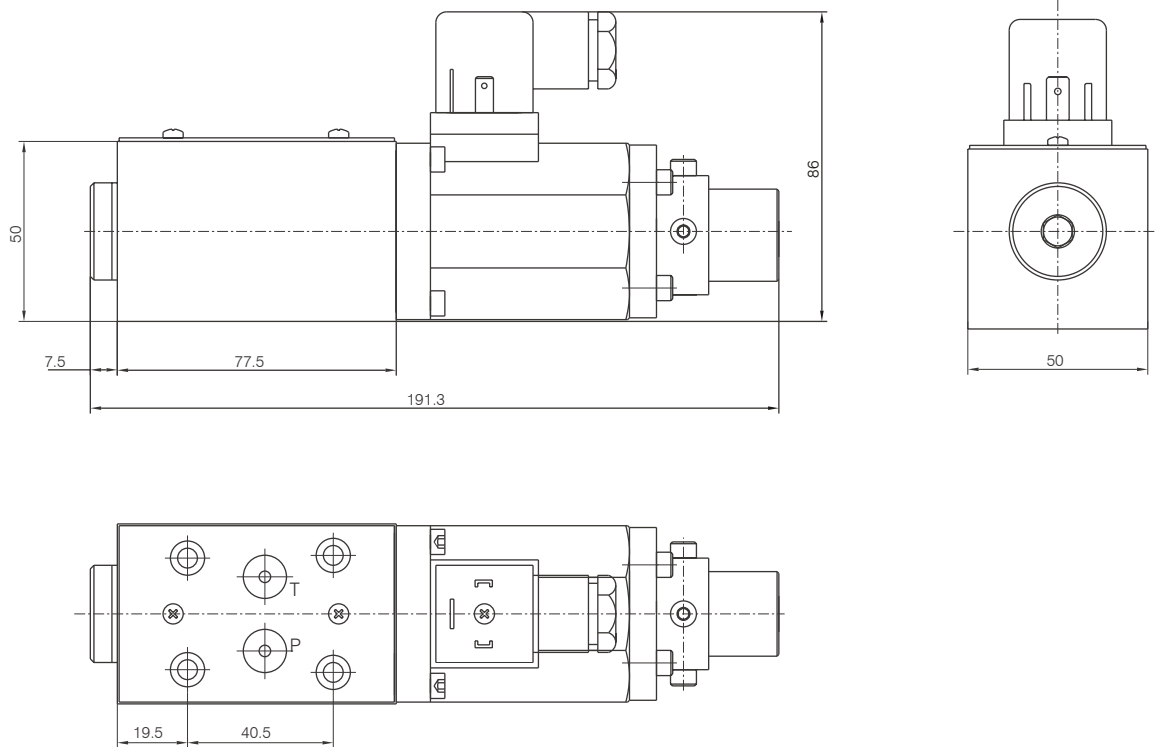
02 Model Characteristic Curves (Measured at $\rho = 36 \times 10^{-6} \text{ m}^2/\text{S}$ $t = 50 \text{ }^\circ\text{C}$)

Output Pressure/Input Current Curves



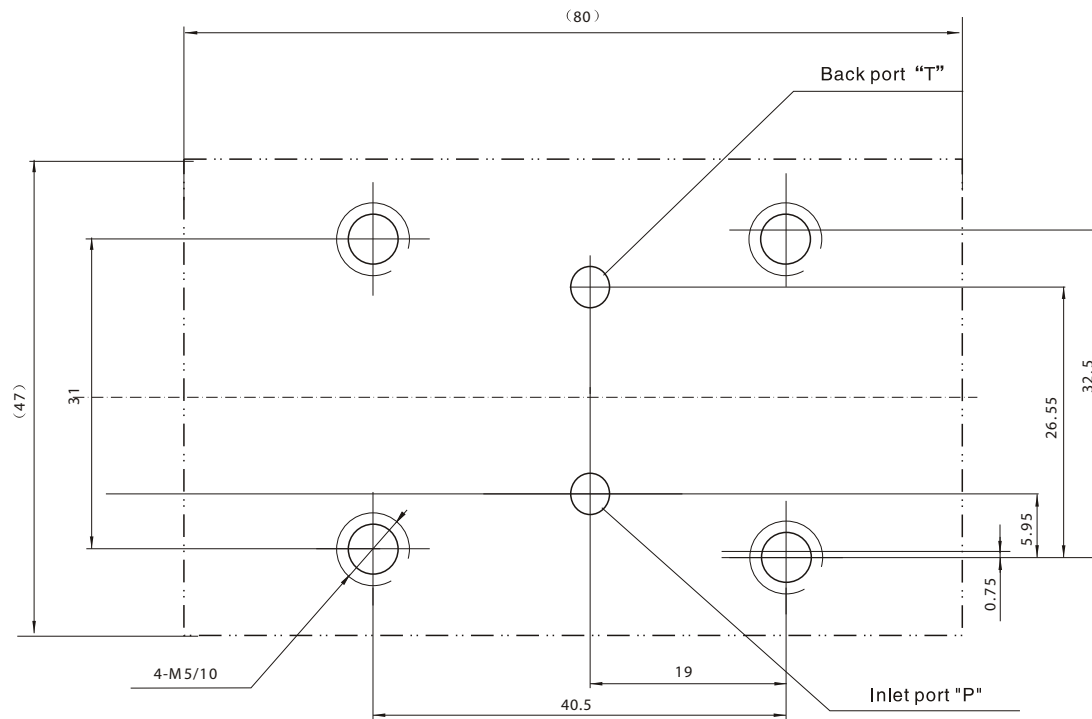
Delay:
With shake dither ———

70 External Dimensions



PROPORTIONAL DIRECTLY OPERATED RELIEF VALVE (WYZ)

Plate Size



The surface, connecting with the valve, should be Ra0.8 roughness, and 0.01/100mm flatness.