

WINMAN WSCW SERİSİ KİLİTLİ DİRSEK HIZ AYAR BAĞLANTILAR

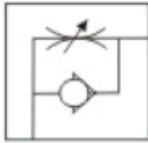


Technical Specification

Fluid	Air (no other gases or liquids)
Operating Pressure	0.1~1MPa (15~150 psi)
Max. Pressure	1.5MPa (225 psi)
Operating Temperature	0.60°C (32 - 140° F)
Applicable Tube	PU / Polyurethane and Nylon

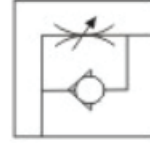
Type

Exhaust Control out



WSCW06-01

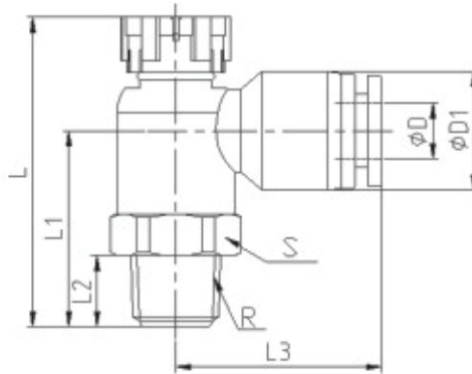
Entering air Control in



WSCW06-01B

When you order control in type, please put B at the end of model type.
For example, WSCW06-01B.

Technical Drawings



MODEL	ΦD	R	ΦD1	L	L1	L2	L3	
WSCW04-M5	4	M5	9.5	28	18	3.5	18	9
WSCW06-M5	6	M5	11.5	28	17.6	3.5	19	9
WSCW04-01	4	R1/8	13	33.5	21.5	7.7	22	13
WSCW06-01	6	R1/8	13	33.5	21.2	7.7	22.3	13
WSCW08-01	8	R1/8	14.5	33.5	20	7.7	25	13