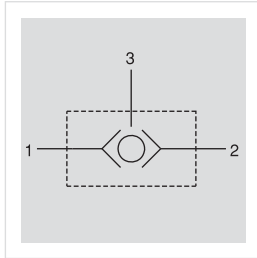


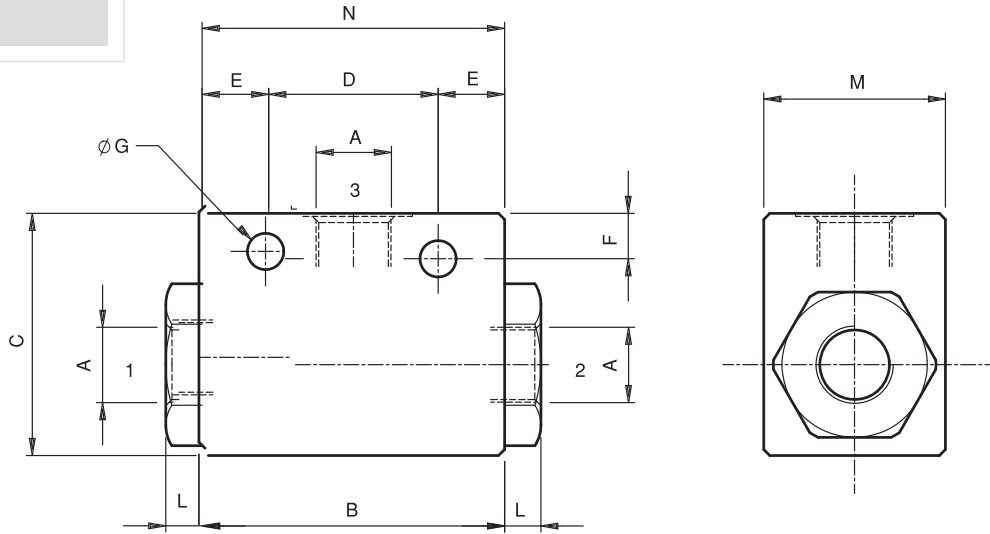
## VEYA VALFİ / LOAD SHUTTLE-BALL VALVES

## VUSF



VUSF Veya valfleri iki basınç hattı aynı anda valfe geldiğinde basıncı küçük olanı kapatır veya ikisini de ayırır.

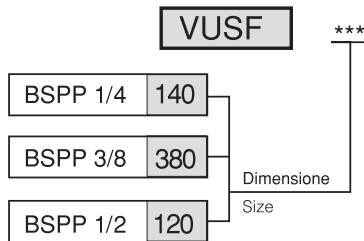
VUSF load shuttle ball valves are employed when two pressure lines converge inside the valve in the same time (the lower pressure line locks) or separately



## TEKNİK ÖZELLİKLER / FEATURES

Kod Code	A	Max. debi Max flow l/min	Max. basınç Max pressure bar	B	C	D	E	F	G	L	M	N	Ağırlık Weight Kg
VUSF140	BSPP 1/4	20	350	50	40	28	11	8	7,5	6	30	62	0,21
VUSF380	BSPP 3/8	30		65	50	45	10	8	8	6,5	35	78	0,41
VUSF120	BSPP 1/2	60	320	80	60	60	10	10	10	7,5	40	95	0,67

## SİPARİŞ KODU / ORDERING CODE



## BASINÇ DÜŞÜŞÜ / PRESSURE DROP

