

SOLENOID VALVES

WVP0.M18 Valve Series



Description

METRIC Cartridge - 210 bar Directional Valve - 3/2 Spool type

A Solenoid operated, 3 way 2 positions, spool type, direct acting, screw-in hydraulic directional cartridge valve.

In the de-energized mode, the WVP0 M18 allows flow bidirectionally between ports 1 and 3, while blocking flow at 2.

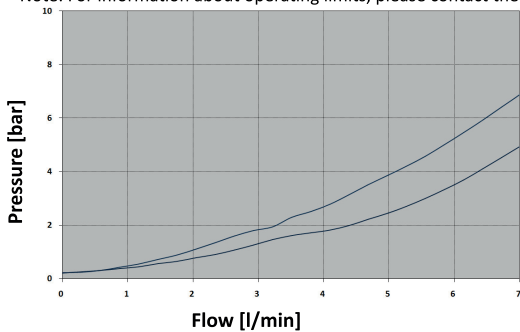
In the energized mode, bidirectional flow is allowed between ports 1 and 2, while flow is blocked at 3.

Even if port 1 may be fully pressurized, it is not intended to be used as the inlet.

Low pressure drop thanks to optimized flow path.

Performance

Note: For information about operating limits, please contact the factory.



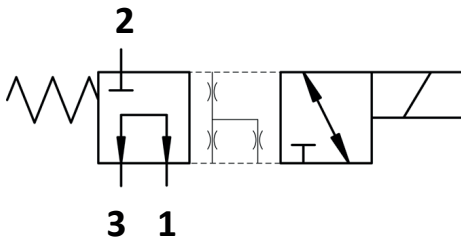
Technical Data

Maximum operating pressure: 210 bar
 Maximum flow: 7 l/min
 Internal leakage: max 20 cm³/min @ 210 bar
 Temperature: -30°C to 110°C
 Fluids: Mineral-based or synthetics with lubricating properties at viscosities of 7.4 to 420 cSt

Minimum pull-in voltage: 85% of nominal
 Orientation: no restrictions
 Installation torque: 10-15 Nm
 Seal kit code: SK.034 and SK.027 (for coil)
 Weight: 0.110 kg

NOTE: The performance chart illustrates flow handling capacity 1 to 3 (de-energized) and 1 to 2 (energized). P/Q curves are recorded at TOil = 40°C and 46 cSt

Control Port (S)



Technical Features

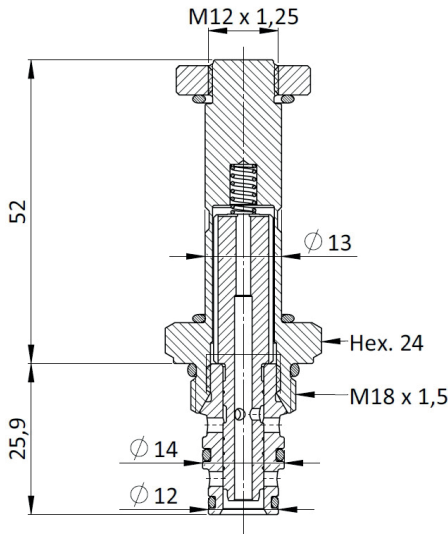
All external surfaces are zinc plated and corrosion-proof.
 All valve parts are made of high strength steel.
 Spool and cage are hardened and super-finished to ensure minimal wear and extended service life.
 Coil seals protect the solenoid system.
 Metric cavity.

Note: Standard sealing NBR (BUNA-N)

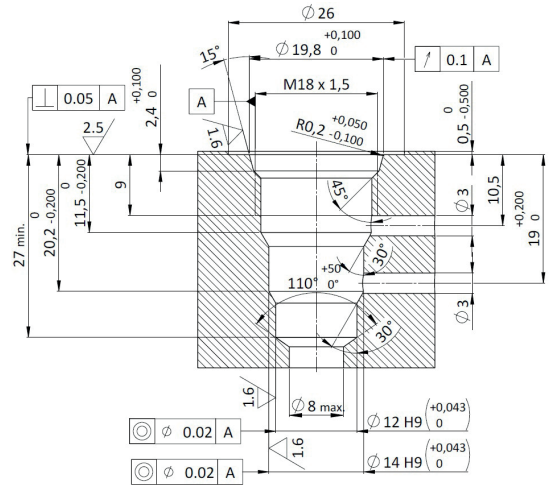
SOLENOID VALVES

WVP0.M18 Valve Series

Cross Section



Cavity Details



Ordering Code

W V P 0 . M 1 8 . 0 0 . 1 0 0

↓
Valve basic code

←
Cavity
M18 = METRIC M18 x 1,5
with Ø14 and Ø12 nose sizes

→ **Flow path**

1 and 3 connected, 2 blocked
(de-energized)
1 and 2 connected, 3 blocked
(energized)

→ **Marking**

0 = Standard factory marking
Customized markings can be done upon request

COIL



Use **18W** coil to operate this valve.